



# 2023 PRODUCT CATALOG

**AZUSA**  
**SAFETY**

# QUICK GUIDE

## GENERAL PURPOSE WORK GLOVES

| SERIES & ITEM #           | COATING                            | GRIP                  | PAGE |
|---------------------------|------------------------------------|-----------------------|------|
| Commander SERIES   CM2000 | Polyurethane                       | Smooth                | 6    |
| Commander SERIES   CM2010 | Polyurethane                       | Smooth                | 7    |
| Commander SERIES   CM3000 | Nitrile                            | Micro-Foam            | 8    |
| Commander SERIES   CM3020 | Nitrile                            | Sandy-Foam            | 9    |
| Commander SERIES   CM4000 | Latex                              | Crinkle               | 10   |
| Commander SERIES   CM4020 | Latex                              | Crinkle               | 11   |
| DURADEX® SERIES   DX1000  | Nitrile   Water-Based Polyurethane | Micro-Foam            | 12   |
| DURADEX® SERIES   DX1010  | Nitrile   Water-Based Polyurethane | Ultra-Thin Micro-Foam | 13   |
| DURADEX® SERIES   DX1020  | Nitrile   Water-Based Polyurethane | Ultra-Thin Micro-Foam | 14   |
| DURADEX® SERIES   DX1040  | Nitrile   Water-Based Polyurethane | Ultra-Thin Micro-Foam | 15   |
| DURADEX® SERIES   DX1060  | Nitrile   Water-Based Polyurethane | Ultra-Thin Micro-Foam | 16   |
| DURADEX® SERIES   DX3000  | Nitrile                            | Sandy-Foam            | 17   |

## CUT RESISTANT WORK GLOVES

| SERIES & ITEM #           | COATING                            | GRIP                  | PAGE |
|---------------------------|------------------------------------|-----------------------|------|
| Commander SERIES   N10590 | Polyurethane                       | Smooth                | 18   |
| Azusa Safety   AZNBR009   | Nitrile                            | Textured-Foam         | 19   |
| RIG RAPTOR   RAPCR5       | Nitrile                            | Sandy-Foam            | 20   |
| BLUWOLF® Series   BW4000  | Polyurethane                       | Smooth                | 21   |
| BLUWOLF® Series   BW4010  | Polyurethane                       | Smooth                | 22   |
| BLUWOLF® Series   BW4040  | Nitrile   Water-Based Polyurethane | Ultra-Thin Micro-Foam | 23   |
| BLUWOLF® Series   BW4050  | Nitrile   Water-Based Polyurethane | Ultra-Thin Micro-Foam | 24   |
| BLUWOLF® Series   BW4060  | Nitrile   Water-Based Polyurethane | Micro-Foam            | 25   |
| BLUWOLF® Series   BW4080  | Nitrile                            | Sandy-Foam            | 26   |
| BLUWOLF® Series   BW4090  | Nitrile                            | Sandy-Foam            | 27   |
| BLUWOLF® Series   BW5000  | Nitrile                            | Sandy-Foam            | 28   |

## WINTER WORK GLOVES

| SERIES & ITEM #        | COATING | GRIP       | PAGE |
|------------------------|---------|------------|------|
| Azusa Safety   LW1010  | Latex   | Crinkle    | 29   |
| Azusa Safety   LW1020  | Latex   | Foam       | 30   |
| Azusa Safety   LW1030  | Latex   | Foam       | 31   |
| Azusa Safety   27-1070 | Latex   | Sandy-Foam | 32   |
| Azusa Safety   27-1080 | Latex   | Sandy-Foam | 33   |

## DISPOSABLE GLOVES

| SERIES & ITEM #       | MATERIAL | PAGE |
|-----------------------|----------|------|
| Azusa Safety   ND4020 | Nitrile  | 34   |
| Azusa Safety   ND6020 | Nitrile  | 35   |

## LEATHER GLOVES

| SERIES & ITEM #        | MATERIAL          | PAGE |
|------------------------|-------------------|------|
| Azusa Safety   S96112  | Split Cowhide     | 36   |
| Azusa Safety   S96115  | Split Cowhide     | 37   |
| Azusa Safety   S96118  | Split Cowhide     | 38   |
| Azusa Safety   F92112A | Top Grain Cowhide | 39   |
| Welderbeast   WHYBRID  | Goatskin          | 40   |

## EYE PROTECTION

| SERIES & ITEM #               | PAGE |
|-------------------------------|------|
| CRUISER   Classic or Anti-Fog | 41   |
| REAPER   Classic or Anti-Fog  | 42   |
| SCOUT   Classic or Anti-Fog   | 43   |



***COMMANDER***

***DURADEX***

***RAPTOR***

***WELDER BEAST***

***AZUSA***  
***SAFETY***



## **POLYURETHANE (PU)**

Polyurethane coatings are durable, flexible and provide great puncture resistance, excellent abrasion resistance and enhanced grip in dry/oily conditions.



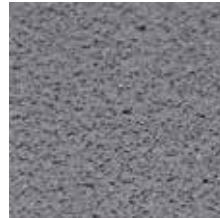
## **NITRILE | SANDY-FOAM**

Sandy-Foam Nitrile Coatings are form fitting and flexible and provide excellent abrasion resistance and provide enhanced grip in wet/oily conditions.



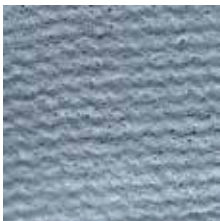
## **NITRILE | FLAT**

Flat Nitrile coatings provide good abrasion resistance, puncture resistance and enhanced grip in wet/dry/oily conditions and are resistant to liquid absorption.



## **NITRILE | DURA-FOAM**

Dura-Foam Nitrile coatings are lightweight, durable and offer excellent dexterity, abrasion resistance and enhanced grip in wet/dry/oily conditions.

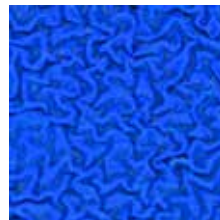


## **NITRILE | FOAM**

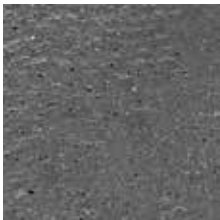
Foam Nitrile coatings are softer and more flexible than flat nitrile and provide enhanced grip in dry/oily conditions.

## **LATEX**

Latex coatings offer increased durability, flexibility and abrasion resistance and provide enhanced grip in dry conditions.

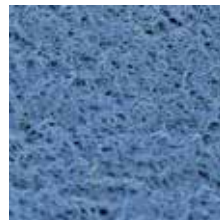


## **CRINKLE**

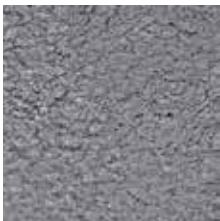


## **NITRILE | MICRO-FOAM**

Micro-Foam Nitrile coatings offer increased flexibility and abrasion resistance and provides enhanced grip in dry/oily conditions.



## **FOAM**



## **NITRILE | ULTRA-FOAM**

Ultra-Foam Nitrile coatings are form fitting and offer excellent dexterity, abrasion resistance and provide enhanced grip in dry/oily conditions.



## **SANDY-FOAM**

# GENERAL PURPOSE WORK GLOVES

## COMMANDER SERIES | CM2000

### FEATURES

- 1 13-Gauge seamless knit nylon liner for increased comfort, breathability and agility
- 2 Polyurethane coating provides a tactile grip in dry and slightly oily conditions, ideal for applications that require increased dexterity.
- 3 Knit wrist helps prevent dirt and debris from entering the glove.
- 4 Color coded hems for easy size identification.

### PRODUCT SPECS

|                     |                       |
|---------------------|-----------------------|
| Liner Material:     | Nylon                 |
| Liner Gauge:        | 13                    |
| Liner Color:        | Black                 |
| Liner Construction: | Seamless Machine Knit |
| Coating Material:   | Polyurethane          |
| Coating Grip:       | Smooth                |
| Coating Color:      | Black                 |
| Coating Coverage:   | Palm & Finger         |
| Cuff Type:          | Knit Wrist            |
| Reinforcement Type: | None                  |
| Anti-Static:        | No                    |
| Touchscreen:        | Yes                   |
| Flame Resistant:    | No                    |
| Machine Washable:   | Yes                   |
| Packaging:          | 240PR   20DZ   1CS    |

### APPLICATIONS

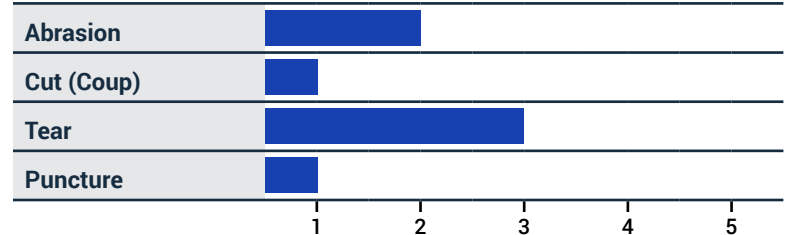
- Small Parts Handling
- Plumbing/HVAC
- Janitorial
- Electrical
- Material Handling
- Maintenance
- Manufacturing



### PERFORMANCE

ANSI | ISEA 105-2016 : N/A

EN388 : 2016 | 2131X



### ORDER NUMBERS

| Item Number | Pair         | Dozen          | Case           |
|-------------|--------------|----------------|----------------|
| CM2000-XS   | 818187015591 | 10818187015598 | 20818187015595 |
| CM2000-S    | 818187014532 | 10818187014539 | 20818187014536 |
| CM2000-M    | 818187015331 | 10818187015338 | 20818187015335 |
| CM2000-L    | 818187015348 | 10818187015345 | 20818187015342 |
| CM2000-XL   | 818187015355 | 10818187015352 | 20818187015359 |
| CM2000-2XL  | 818187015362 | 10818187015369 | 20818187015366 |

# GENERAL PURPOSE WORK GLOVES

## COMMANDER SERIES | CM2010

### FEATURES

- 1 13-Gauge seamless knit nylon liner for increased comfort, breathability and agility.
- 2 Polyurethane coating provides a tactile grip in dry and slightly oily conditions, ideal for applications that require increased dexterity.
- 3 Knit wrist helps prevent dirt and debris from entering the glove.
- 4 Color coded hems for easy size identification.

### PRODUCT SPECS

|                     |                       |
|---------------------|-----------------------|
| Liner Material:     | Nylon                 |
| Liner Gauge:        | 13                    |
| Liner Color:        | Gray                  |
| Liner Construction: | Seamless Machine Knit |
| Coating Material:   | Polyurethane          |
| Coating Grip:       | Smooth                |
| Coating Color:      | Gray                  |
| Coating Coverage:   | Palm & Finger         |
| Cuff Type:          | Knit Wrist            |
| Reinforcement Type: | None                  |
| Anti-Static:        | No                    |
| Touchscreen:        | Yes                   |
| Flame Resistant:    | No                    |
| Machine Washable:   | Yes                   |
| Packaging:          | 120PR   10DZ   1CS    |

### APPLICATIONS

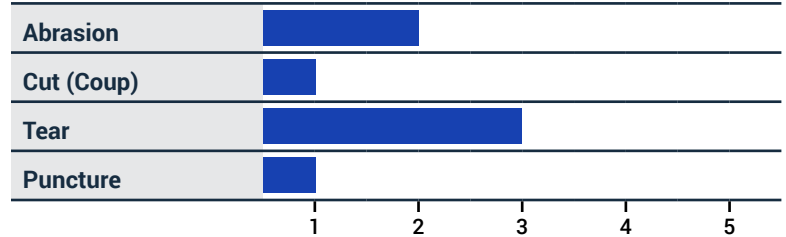
- Small Parts Handling
- Plumbing/HVAC
- Janitorial
- Electrical
- Material Handling
- Maintenance
- Manufacturing



### PERFORMANCE

ANSI | ISEA 105-2016 : N/A

EN388 : 2016 | 2131X



### ORDER NUMBERS

| Item Number | Pair         | Dozen          | Case           |
|-------------|--------------|----------------|----------------|
| CM2010-XS   | 818187015607 | 10818187015604 | 20818187015601 |
| CM2010-S    | 818187015379 | 10818187015376 | 20818187015373 |
| CM2010-M    | 818187015386 | 10818187015383 | 20818187015380 |
| CM2010-L    | 818187015393 | 10818187015390 | 20818187015397 |
| CM2010-XL   | 818187015409 | 10818187015406 | 20818187015403 |
| CM2010-2XL  | 818187015416 | 10818187015413 | 20818187015410 |

# GENERAL PURPOSE WORK GLOVES

## COMMANDER SERIES | CM3000

### FEATURES

- 1 15-Gauge high-density nylon/spandex liner provides increased comfort and breathability to help reduce finger fatigue while keeping hands cool and dry.
- 2 Ultra-thin, micro-foam nitrile coating is soft, flexible and provides outstanding abrasion resistance and grip in wet, dry and oily conditions.
- 3 Knit wrist helps prevent dirt and debris from entering the glove.
- 4 Color coded hems for easy size identification.

### PRODUCT SPECS

|                     |                       |
|---------------------|-----------------------|
| Liner Material:     | Nylon/Spandex         |
| Liner Gauge:        | 15                    |
| Liner Color:        | Gray                  |
| Liner Construction: | Seamless Machine Knit |
| Coating Material:   | Nitrile               |
| Coating Grip:       | Micro-Foam            |
| Coating Color:      | Black                 |
| Coating Coverage:   | Palm & Finger         |
| Cuff Type:          | Knit Wrist            |
| Reinforcement Type: | None                  |
| Anti-Static:        | No                    |
| Touchscreen:        | Yes                   |
| Flame Resistant:    | No                    |
| Machine Washable:   | Yes                   |
| Packaging:          | 120PR   10DZ   1CS    |

### APPLICATIONS

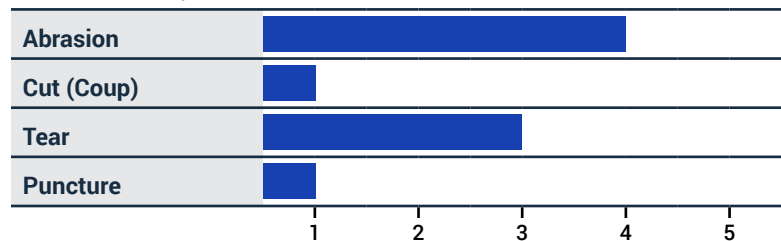
- Small Parts Handling
- Plumbing/HVAC
- Metal Fabrication
- Janitorial
- General Assembly
- Automotive Repair & Assembly
- Precision Assembly
- Material Handling
- Telecommunications



### PERFORMANCE

ANSI | ISEA 105-2016 : N/A

EN388 : 2016 | 4131X



### ORDER NUMBERS

| Item Number | Pair         | Dozen          | Case           |
|-------------|--------------|----------------|----------------|
| CM3000-S    | 818187015621 | 10818187015628 | 20818187015625 |
| CM3000-M    | 818187015638 | 10818187015635 | 20818187015632 |
| CM3000-L    | 818187015645 | 10818187015642 | 20818187015649 |
| CM3000-XL   | 818187015652 | 10818187015659 | 20818187015656 |
| CM3000-2XL  | 818187015669 | 10818187015666 | 20818187015663 |



# GENERAL PURPOSE WORK GLOVES

## COMMANDER SERIES | CM3020

### FEATURES

- 1 15-Gauge seamless knit nylon/spandex liner offers increased comfort, breathability and finger dexterity.
- 2 Sandy-foam nitrile coatings are form fitting, flexible and provide excellent abrasion resistance with enhanced grip in wet and oily conditions.
- 3 Knit wrist helps prevent dirt and debris from entering the glove.
- 4 Color coded hems for easy size identification.

### PRODUCT SPECS

|                     |                       |
|---------------------|-----------------------|
| Liner Material:     | Nylon/Spandex         |
| Liner Gauge:        | 13                    |
| Liner Color:        | Gray                  |
| Liner Construction: | Seamless Machine Knit |
| Coating Material:   | Nitrile               |
| Coating Grip:       | Sandy-Foam            |
| Coating Color:      | Black                 |
| Coating Coverage:   | Palm & Finger         |
| Cuff Type:          | Knit Wrist            |
| Reinforcement Type: | None                  |
| Anti-Static:        | No                    |
| Touchscreen:        | Yes                   |
| Flame Resistant:    | No                    |
| Machine Washable:   | Yes                   |
| Packaging:          | 120PR   10DZ   1CS    |

### APPLICATIONS

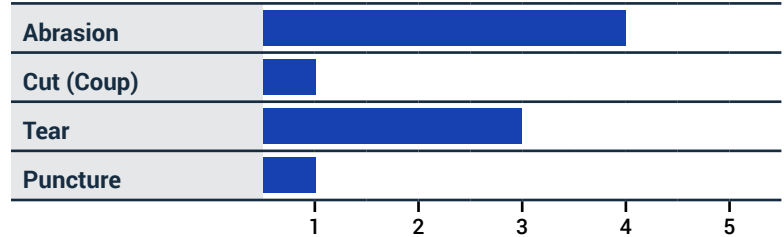
- Small Parts Handling
- Plumbing/HVAC
- Quality Control and Inspection
- Janitorial
- Electrical
- General Assembly
- Precision Assembly
- Material Handling
- Maintenance, Repair and Operations
- Manufacturing



### PERFORMANCE

ANSI | ISEA 105-2016 : N/A

EN388 : 2016 | 4131X



### ORDER NUMBERS

| Item Number | Pair         | Dozen          | Case           |
|-------------|--------------|----------------|----------------|
| CM3020-S    | 818187015744 | 10818187015741 | 20818187015748 |
| CM3020-M    | 818187015751 | 10818187015758 | 20818187015755 |
| CM3020-L    | 818187015768 | 10818187015765 | 20818187015762 |
| CM3020-XL   | 818187015775 | 10818187015772 | 20818187015779 |
| CM3020-2XL  | 818187015782 | 10818187015789 | 20818187015786 |

# GENERAL PURPOSE WORK GLOVES

## COMMANDER SERIES | CM4000

### FEATURES

- 1 13-Gauge seamless knit polyester liner offers increased breathability and dexterity.
- 2 Crinkle latex coatings provide superior grip in wet and dry conditions as well as excellent abrasion resistance. Coating is designed to channel fluids away allowing better contact on wet surfaces.
- 3 Knit wrist helps prevent dirt and debris from entering the glove.
- 4 Color coded hems for easy size identification.

### PRODUCT SPECS

|                     |                       |
|---------------------|-----------------------|
| Liner Material:     | Polyester             |
| Liner Gauge:        | 13                    |
| Liner Color:        | Black                 |
| Liner Construction: | Seamless Machine Knit |
| Coating Material:   | Latex                 |
| Coating Grip:       | Crinkle               |
| Coating Color:      | Black                 |
| Coating Coverage:   | Palm & Finger         |
| Cuff Type:          | Knit Wrist            |
| Reinforcement Type: | None                  |
| Anti-Static:        | No                    |
| Touchscreen:        | No                    |
| Flame Resistant:    | No                    |
| Machine Washable:   | Yes                   |
| Packaging:          | 120PR   10DZ   1CS    |

### APPLICATIONS

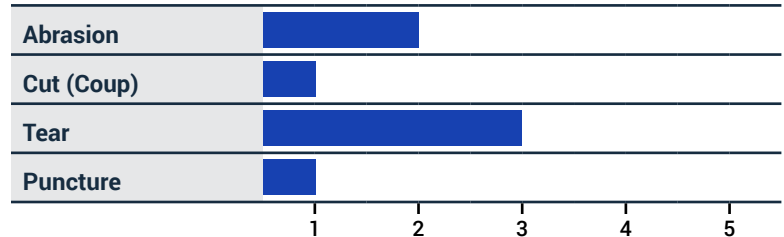
- Small Parts Handling
- Plumbing/HVAC
- Quality Control and Inspection
- Janitorial
- Electrical
- General Assembly
- Precision Assembly
- Material Handling
- Maintenance, Repair and Operations
- Manufacturing



### PERFORMANCE

ANSI | ISEA 105-2016 : N/A

EN388 : 2016 | 2131X



### ORDER NUMBERS

| Item Number | Pair         | Dozen          | Case           |
|-------------|--------------|----------------|----------------|
| CM4000-S    | 818187015485 | 10818187015482 | 20818187015489 |
| CM4000-M    | 818187015492 | 10818187015499 | 20818187015496 |
| CM4000-L    | 818187015508 | 10818187015505 | 20818187015502 |
| CM4000-XL   | 818187015515 | 10818187015512 | 20818187015519 |
| CM4000-2XL  | 818187015522 | 10818187015529 | 20818187015526 |

# GENERAL PURPOSE WORK GLOVES

## COMMANDER SERIES | CM4020

### FEATURES

- 1 13-Gauge seamless knit polyester/cotton liner is soft on the hand, flexible and breathable.
- 2 Crinkle latex coatings provide superior grip in wet and dry conditions as well as excellent abrasion resistance. Coating is designed to channel fluids away allowing for better contact on wet surfaces.
- 3 Knit wrist helps prevent dirt and debris from entering the glove.
- 4 Color coded hems for easy size identification.

### PRODUCT SPECS

|                     |                       |
|---------------------|-----------------------|
| Liner Material:     | Polyester   Cotton    |
| Liner Gauge:        | 10                    |
| Liner Color:        | Gray                  |
| Liner Construction: | Seamless Machine Knit |
| Coating Material:   | Latex                 |
| Coating Grip:       | Crinkle               |
| Coating Color:      | Blue                  |
| Coating Coverage:   | Palm & Finger         |
| Cuff Type:          | Knit Wrist            |
| Reinforcement Type: | None                  |
| Anti-Static:        | No                    |
| Touchscreen:        | No                    |
| Flame Resistant:    | No                    |
| Machine Washable:   | Yes                   |
| Packaging:          | 120PR   10DZ   1CS    |

### APPLICATIONS

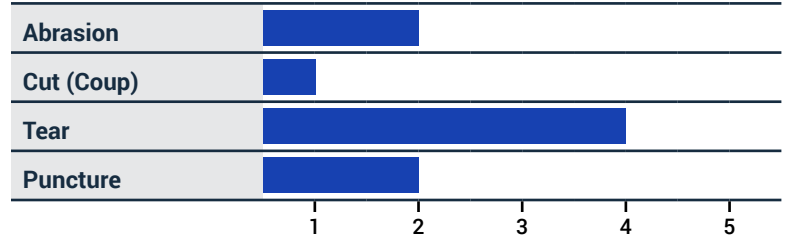
- Small Parts Handling
- Plumbing/HVAC
- Quality Control and Inspection
- Janitorial
- Electrical
- General Assembly
- Precision Assembly
- Material Handling
- Maintenance, Repair and Operations
- Manufacturing



### PERFORMANCE

ANSI | ISEA 105-2016 : N/A

EN388 : 2016 | 2142X



### ORDER NUMBERS

| Item Number | Pair         | Dozen          | Case           |
|-------------|--------------|----------------|----------------|
| CM4020-S    | 818187015546 | 10818187015543 | 20818187015540 |
| CM4020-M    | 818187015553 | 10818187015550 | 20818187015557 |
| CM4020-L    | 818187015560 | 10818187015567 | 20818187015564 |
| CM4020-XL   | 818187015577 | 10818187015574 | 20818187015571 |
| CM4020-2XL  | 818187015584 | 10818187015581 | 20818187015588 |

# GENERAL PURPOSE WORK GLOVES

## DURADEX® SERIES | DX1000

### FEATURES

- 1 15-Gauge high-density nylon/spandex liner provides increased comfort and breathability to help reduce finger fatigue while keeping hands cool and dry.
- 2 Ultra-thin, micro-foam nitrile/polyurethane coating is soft, flexible and provides outstanding abrasion resistance and grip in wet, dry and oily conditions.
- 3 Knit wrist helps prevent dirt and debris from entering the glove.

### PRODUCT SPECS

|                            |                                    |
|----------------------------|------------------------------------|
| <b>Liner Material:</b>     | Nylon/Spandex                      |
| <b>Liner Gauge:</b>        | 15                                 |
| <b>Liner Color:</b>        | Gray                               |
| <b>Liner Construction:</b> | Seamless Machine Knit              |
| <b>Coating Material:</b>   | Nitrile   Water-Based Polyurethane |
| <b>Coating Grip:</b>       | Micro-Foam                         |
| <b>Coating Color:</b>      | Black                              |
| <b>Coating Coverage:</b>   | Palm & Finger                      |
| <b>Cuff Type:</b>          | Knit Wrist                         |
| <b>Reinforcement Type:</b> | None                               |
| <b>Anti-Static:</b>        | No                                 |
| <b>Touchscreen:</b>        | Yes                                |
| <b>Flame Resistant:</b>    | No                                 |
| <b>Machine Washable:</b>   | Yes                                |
| <b>Packaging:</b>          | 120PR   10DZ   1CS                 |

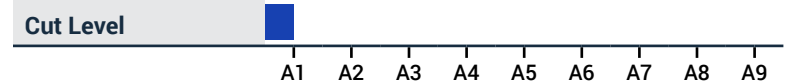
### APPLICATIONS

- Small Parts Handling
- Plumbing/HVAC
- Metal Fabrication
- Janitorial
- General Assembly
- Automotive Repair & Assembly
- Precision Assembly
- Material Handling
- Telecommunications

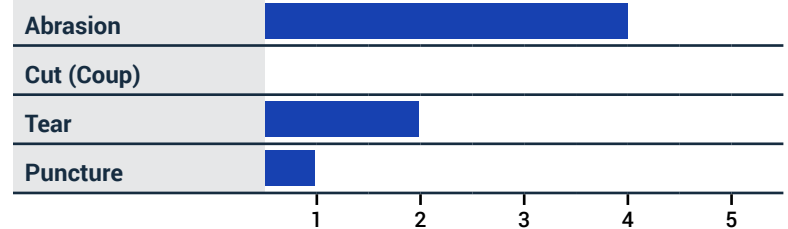


### PERFORMANCE

#### ANSI | ISEA 105-2016



#### EN388 : 2016 | 4X21A



### ORDER NUMBERS

| Item Number | Pair         | Dozen          | Case           |
|-------------|--------------|----------------|----------------|
| DX1000-S    | 818187014877 | 10818187014874 | 20818187014871 |
| DX1000-M    | 818187014884 | 10818187014881 | 20818187014888 |
| DX1000-L    | 818187014891 | 10818187014898 | 20818187014895 |
| DX1000-XL   | 818187014907 | 10818187014904 | 20818187014901 |
| DX1000-2XL  | 818187014914 | 10818187014911 | 20818187014918 |

# GENERAL PURPOSE WORK GLOVES

## DURADEX® SERIES | DX1010

### FEATURES

- 1 15-Gauge high-density nylon/spandex liner provides increased comfort and breathability to help reduce finger fatigue and keeps hands cool and dry.
- 2 Ultra-Thin micro-foam nitrile/polyurethane coating is soft, flexible and provides outstanding abrasion resistance in wet, dry and oily conditions.
- 3 Reinforced nitrile thumb patch between the forefinger and thumb provides an added layer of protection and increases glove longevity.
- 4 Elasticized knitted cuff for a comfortable and secure fit.

### PRODUCT SPECS

|                     |                                    |
|---------------------|------------------------------------|
| Liner Material:     | Nylon/Spandex                      |
| Liner Gauge:        | 15                                 |
| Liner Color:        | Gray                               |
| Liner Construction: | Seamless Machine Knit              |
| Coating Material:   | Nitrile   Water-Based Polyurethane |
| Coating Grip:       | Ultra-Thin Micro-Foam              |
| Coating Color:      | Black                              |
| Coating Coverage:   | Palm & Finger                      |
| Cuff Type:          | Knit Wrist                         |
| Reinforcement Type: | Nitrile Thumb Crotch               |
| Anti-Static:        | No                                 |
| Touchscreen:        | Yes                                |
| Flame Resistant:    | No                                 |
| Machine Washable:   | Yes                                |
| Packaging:          | 120PR   10DZ   1CS                 |

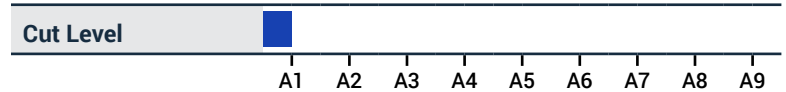
### APPLICATIONS

- Small Parts Handling
- Plumbing/HVAC
- Metal Fabrication
- Janitorial
- General Assembly
- Automotive Repair & Assembly
- Precision Assembly
- Material Handling
- Telecommunications

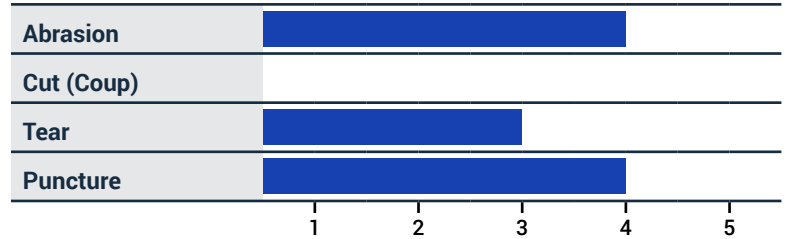


### PERFORMANCE

#### ANSI | ISEA 105-2016



#### EN388 : 2016 | 4X21A



### ORDER NUMBERS

| Item Number | Pair         | Dozen          | Case           |
|-------------|--------------|----------------|----------------|
| DX1010-S    | 818187014921 | 10818187014928 | 20818187014925 |
| DX1010-M    | 818187014938 | 10818187014935 | 20818187014932 |
| DX1010-L    | 818187014945 | 10818187014942 | 20818187014949 |
| DX1010-XL   | 818187014952 | 10818187014959 | 20818187014956 |
| DX1010-2XL  | 818187014969 | 10818187014966 | 20818187014963 |

# GENERAL PURPOSE WORK GLOVES

## DURADEX® SERIES | DX1020

### FEATURES

- 1 15-Gauge high-density nylon/spandex liner provides increased comfort and breathability to help reduce finger fatigue while keeping hands cool and dry.
- 2 Ultra-thin, micro-foam nitrile/polyurethane coating is soft, flexible and provides outstanding abrasion resistance and grip in wet, dry and oily conditions.
- 3 Nitrile dots on palm and fingers provide durability, abrasion resistance and help channel fluids away, improving grip.
- 4 Knit wrist helps prevent dirt and debris from entering the glove.

### PRODUCT SPECS

|                            |                                       |
|----------------------------|---------------------------------------|
| <b>Liner Material:</b>     | Nylon/Spandex                         |
| <b>Liner Gauge:</b>        | 15                                    |
| <b>Liner Color:</b>        | Gray                                  |
| <b>Liner Construction:</b> | Seamless Machine Knit                 |
| <b>Coating Material:</b>   | Nitrile   Water-Based Polyurethane    |
| <b>Coating Grip:</b>       | Ultra-Thin Micro-Foam                 |
| <b>Coating Color:</b>      | Black                                 |
| <b>Coating Coverage:</b>   | Palm & Finger                         |
| <b>Cuff Type:</b>          | Knit Wrist                            |
| <b>Reinforcement Type:</b> | Nitrile Surface Dotted Palm & Fingers |
| <b>Anti-Static:</b>        | No                                    |
| <b>Touchscreen:</b>        | No                                    |
| <b>Flame Resistant:</b>    | No                                    |
| <b>Machine Washable:</b>   | Yes                                   |
| <b>Packaging:</b>          | 120PR   10DZ   1CS                    |

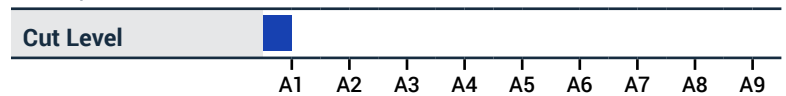
### APPLICATIONS

- Small Parts Handling
- Plumbing/HVAC
- Metal Fabrication
- Janitorial
- General Assembly
- Automotive Repair & Assembly
- Precision Assembly
- Material Handling
- Telecommunications

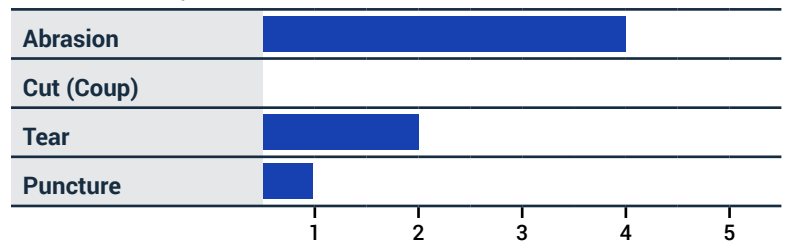


### PERFORMANCE

#### ANSI | ISEA 105-2016



#### EN388 : 2016 | 4X21A



### ORDER NUMBERS

| Item Number | Pair         | Dozen          | Case           |
|-------------|--------------|----------------|----------------|
| DX1020-S    | 818187014976 | 10818187014973 | 20818187014970 |
| DX1020-M    | 818187014983 | 10818187014980 | 20818187014987 |
| DX1020-L    | 818187014990 | 10818187014997 | 20818187014994 |
| DX1020-XL   | 818187015003 | 10818187015000 | 20818187015007 |
| DX1020-2XL  | 818187015010 | 10818187015017 | 20818187015014 |

# GENERAL PURPOSE WORK GLOVES

## DURADEX® SERIES | DX1040

### FEATURES

- 1 15-Gauge high-density nylon/spandex liner provides increased comfort and breathability to help reduce finger fatigue while keeping hands cool and dry.
- 2 Ultra-thin, micro-foam nitrile/polyurethane coating is soft, flexible and provides outstanding abrasion resistance and grip in wet, dry and oily conditions.
- 3 Knit wrist helps prevent dirt and debris from entering the glove

### PRODUCT SPECS

|                     |                                    |
|---------------------|------------------------------------|
| Liner Material:     | Nylon/Spandex                      |
| Liner Gauge:        | 15                                 |
| Liner Color:        | Gray                               |
| Liner Construction: | Seamless Machine Knit              |
| Coating Material:   | Nitrile   Water-Based Polyurethane |
| Coating Grip:       | Ultra-Thin Micro-Foam              |
| Coating Color:      | Black                              |
| Coating Coverage:   | Palm & Finger                      |
| Cuff Type:          | Knit Wrist                         |
| Reinforcement Type: | None                               |
| Anti-Static:        | No                                 |
| Touchscreen:        | Yes                                |
| Flame Resistant:    | No                                 |
| Machine Washable:   | Yes                                |
| Packaging:          | 120PR   10DZ   1CS                 |

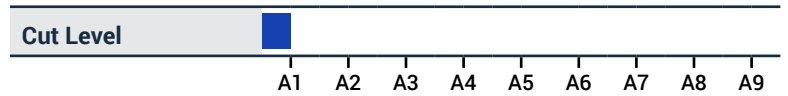
### APPLICATIONS

- Small Parts Handling
- Plumbing/HVAC
- Metal Fabrication
- Janitorial
- General Assembly
- Automotive Repair & Assembly
- Precision Assembly
- Material Handling
- Telecommunications

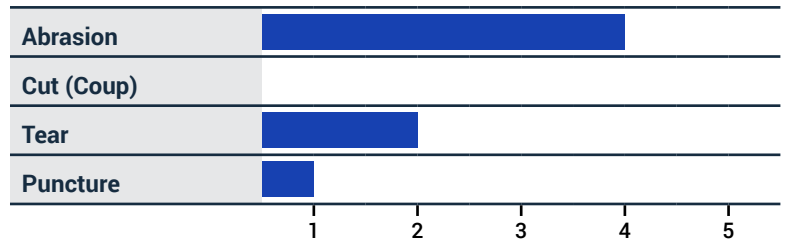


### PERFORMANCE

#### ANSI | ISEA 105-2016



#### EN388 : 2016 | 4X21A



### ORDER NUMBERS

| Item Number | Pair         | Dozen          | Case           |
|-------------|--------------|----------------|----------------|
| DX1040-S    | 818187015027 | 10818187015024 | 20818187015021 |
| DX1040-M    | 818187015034 | 10818187015031 | 20818187015038 |
| DX1040-L    | 818187015041 | 10818187015048 | 20818187015045 |
| DX1040-XL   | 818187015058 | 10818187015055 | 20818187015052 |
| DX1040-2XL  | 818187015065 | 10818187015062 | 20818187015069 |

# GENERAL PURPOSE WORK GLOVES

## DURADEX® SERIES | DX1060

### FEATURES

- 1 15-Gauge high-density nylon/spandex liner provides increased comfort and breathability to help reduce finger fatigue while keeping hands cool and dry
- 2 Ultra-thin micro-foam nitrile/polyurethane coating is soft, flexible and provides outstanding abrasion resistance in wet, dry and oily conditions
- 3 Nitrile dots on palm and fingers provide durability, abrasion resistance and help channel fluids away, improving grip.
- 4 Knit wrist helps prevent dirt and debris from entering the glove.

### PRODUCT SPECS

|                            |                                    |
|----------------------------|------------------------------------|
| <b>Liner Material:</b>     | Nylon/Spandex                      |
| <b>Liner Gauge:</b>        | 15                                 |
| <b>Liner Color:</b>        | Gray                               |
| <b>Liner Construction:</b> | Seamless Machine Knit              |
| <b>Coating Material:</b>   | Nitrile   Water-Based Polyurethane |
| <b>Coating Grip:</b>       | Ultra-Thin Micro-Foam              |
| <b>Coating Color:</b>      | Black                              |
| <b>Coating Coverage:</b>   | 3/4                                |
| <b>Cuff Type:</b>          | Knit Wrist                         |
| <b>Reinforcement Type:</b> | Nitrile Dotted Palm & Fingers      |
| <b>Anti-Static:</b>        | No                                 |
| <b>Touchscreen:</b>        | Yes                                |
| <b>Flame Resistant:</b>    | No                                 |
| <b>Machine Washable:</b>   | Yes                                |
| <b>Packaging:</b>          | 120PR   10DZ   1CS                 |

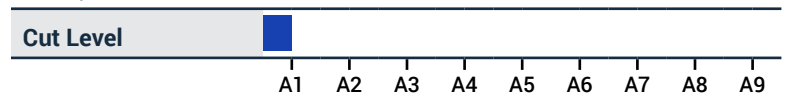
### APPLICATIONS

- Small Parts Handling
- Plumbing/HVAC
- Metal Fabrication
- Janitorial
- General Assembly
- Automotive Repair & Assembly
- Precision Assembly
- Material Handling
- Telecommunications

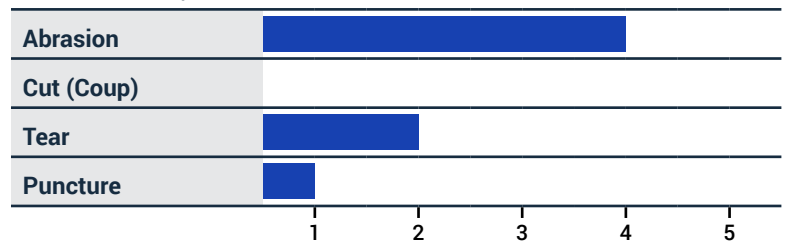


### PERFORMANCE

#### ANSI | ISEA 105-2016



#### EN388 : 2016 | 4X21A



### ORDER NUMBERS

| Item Number | Pair         | Dozen          | Case           |
|-------------|--------------|----------------|----------------|
| v           | 818187015072 | 10818187015079 | 20818187015076 |
| DX1060-M    | 818187015089 | 10818187015086 | 20818187015083 |
| DX1060-L    | 818187015096 | 10818187015093 | 20818187015090 |
| DX1060-XL   | 818187015102 | 10818187015109 | 20818187015106 |
| DX1060-2XL  | 818187015119 | 10818187015116 | 20818187015113 |



# GENERAL PURPOSE WORK GLOVES

## DURADEX® SERIES | DX3000

### FEATURES

- 1 15-Gauge high-density nylon/spandex liner provides increased comfort and breathability to help reduce finger fatigue while keeping hands cool and dry.
- 2 Sandy-foam nitrile/polyurethane coatings are form fitting, flexible and provide excellent abrasion resistance as well as enhanced grip in wet and oily conditions
- 3 Knit wrist helps prevent dirt and debris from entering the glove

### PRODUCT SPECS

|                     |                       |
|---------------------|-----------------------|
| Liner Material:     | Nylon/Spandex         |
| Liner Gauge:        | 15                    |
| Liner Color:        | Gray                  |
| Liner Construction: | Seamless Machine Knit |
| Coating Material:   | Nitrile               |
| Coating Grip:       | Sandy-Foam            |
| Coating Color:      | Black                 |
| Coating Coverage:   | Palm & Finger         |
| Cuff Type:          | Knit Wrist            |
| Reinforcement Type: | None                  |
| Anti-Static:        | No                    |
| Touchscreen:        | Yes                   |
| Flame Resistant:    | No                    |
| Machine Washable:   | Yes                   |
| Packaging:          | 120PR   10DZ   1CS    |

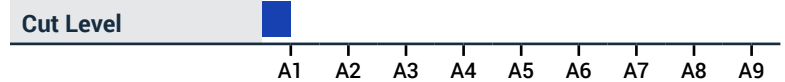
### APPLICATIONS

- Small Parts Handling
- Plumbing/HVAC
- Metal Fabrication
- Janitorial
- General Assembly
- Automotive Repair & Assembly
- Precision Assembly
- Material Handling
- Telecommunications

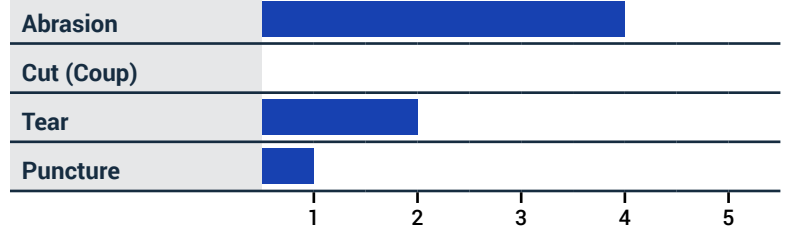


### PERFORMANCE

#### ANSI | ISEA 105-2016



#### EN388 : 2016 | 4X21A



### ORDER NUMBERS

| Item Number | Pair         | Dozen          | Case           |
|-------------|--------------|----------------|----------------|
| DX3000-S    | 818187015126 | 10818187015123 | 20818187015120 |
| DX3000-M    | 818187015133 | 10818187015130 | 20818187015137 |
| DX3000-L    | 818187015140 | 10818187015147 | 20818187015144 |
| DX3000-XL   | 818187015157 | 10818187015154 | 20818187015151 |
| DX3000-2XL  | 818187015164 | 10818187015161 | 20818187015168 |

# CUT RESISTANT WORK GLOVES

## COMMANDER SERIES | N10590

13-Gauge Seamless HPPE Blend, ANSI A3 Cut Resistant Glove with Polyurethane Palm Coating

### FEATURES

- 1 13-Gauge Seamless HPPE, ANSI A3 cut-resistant liner is comfortable for all day use.
- 2 Polyurethane coating provides a tactile grip in dry and slightly oily conditions, ideal for applications that require increased dexterity.
- 3 Knit wrist helps prevent dirt and debris from entering the glove.

### PRODUCT SPECS

|                            |  |
|----------------------------|--|
| <b>Liner Material:</b>     | HPPE   Glass Fiber   Spandex   Nylon   High Strength Nylon |
| <b>Liner Gauge:</b>        | 13   |
| <b>Liner Color:</b>        | Gray   |
| <b>Liner Construction:</b> | Seamless Machine Knit                                      |
| <b>Coating Material:</b>   | Polyurethane   |
| <b>Coating Grip:</b>       | Smooth   |
| <b>Coating Coverage:</b>   | Palm & Finger  |
| <b>Coating Color:</b>      | Gray   |
| <b>Cuff Type:</b>          | Knit Wrist   |
| <b>Reinforcement Type:</b> | None   |
| <b>Anti-Static:</b>        | No   |
| <b>Touchscreen:</b>        | Yes  |
| <b>Flame Resistant:</b>    | No   |
| <b>Machine Washable:</b>   | Yes  |
| <b>Packaging:</b>          | 120PR   10DZ   1CS   |

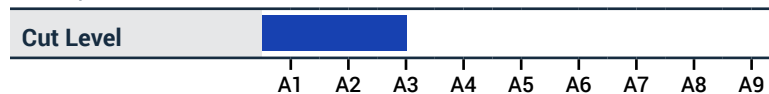
### APPLICATIONS

- Assembly
- Automotive Industry
- Metal Fabrication / Stamping
- Glass Manufacturing
- Utilities
- Aerospace
- Oil & Gas

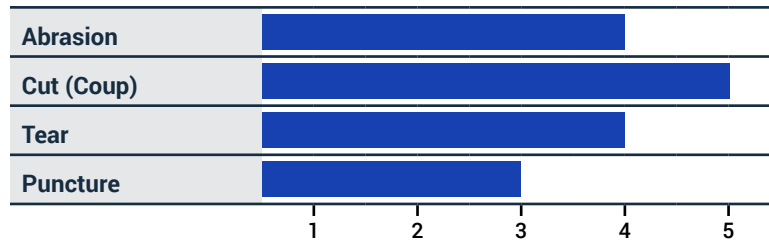


### PERFORMANCE

#### ANSI | ISEA 105-2016



#### EN388 : 2016 | 4543X



### ORDER NUMBERS

| Item Number | Pair         | Dozen          | Case           |
|-------------|--------------|----------------|----------------|
| N10590-S    | 818187010572 | 10818187010576 | 20818187010576 |
| N10590-M    | 818187010589 | 10818187010586 | 20818187010583 |
| N10590-L    | 818187010558 | 10818187010555 | 20818187010552 |
| N10590-XL   | 818187010596 | 10818187010593 | 20818187010590 |
| N10590-2XL  | 818187010824 | 10818187010821 | 20818187010828 |

# CUT RESISTANT WORK GLOVES

## AZUSA SAFETY | AZNBRO09

13-Gauge HPPE Blended, ANSI A3 Cut Resistant Gloves with a Textured-Foam Nitrile Palm Coating

### FEATURES

- 1 13-Gauge seamless knit liner provides excellent cut protection and enhanced comfort and breathability.
- 2 Textured foam nitrile palm coating provides good abrasion resistance and enhanced grip in wet, dry and oily conditions.
- 3 Knit wrist helps prevent dirt and debris from entering the glove.

### PRODUCT SPECS

|                     |  |
|---------------------|--|
| Liner Material:     | HPPE   Glass Fiber   Spandex   Nylon   Polyester |
| Liner Gauge:        | 13   |
| Liner Color:        | Salt & Pepper                                    |
| Liner Construction: | Seamless Machine Knit                            |
| Coating Material:   | Nitrile  |
| Coating Grip:       | Textured-Foam                                    |
| Coating Coverage:   | Palm & Finger                                    |
| Coating Color:      | Black  |
| Cuff Type:          | Knit Wrist                                       |
| Reinforcement Type: | None   |
| Anti-Static:        | No   |
| Touchscreen:        | No   |
| Flame Resistant:    | No   |
| Machine Washable:   | Yes  |
| Packaging:          | 120PR   10DZ   1CS                               |

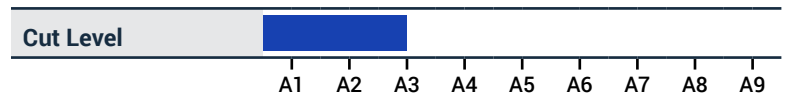
### APPLICATIONS

- Assembly
- Automotive Industry
- Metal Fabrication / Stamping
- Glass Manufacturing
- Utilities
- Aerospace
- Oil & Gas

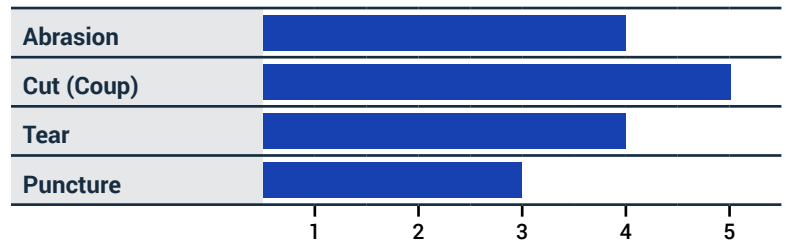


### PERFORMANCE

ANSI | ISEA 105-2016



EN388 : 2016 | 4543X



### ORDER NUMBERS

| Item Number  | Pair         | Dozen          | Case           |
|--------------|--------------|----------------|----------------|
| AZNBRO09-S   | 818187010565 | 10818187010562 | 20818187010569 |
| AZNBRO09-M   | 818187010602 | 10818187010609 | 20818187010606 |
| AZNBRO09-L   | 818187010619 | 10818187010616 | 20818187010613 |
| AZNBRO09-XL  | 818187010909 | 10818187010906 | 20818187010903 |
| AZNBRO09-2XL | 818187012149 | 10818187012146 | 20818187012143 |

# CUT RESISTANT WORK GLOVES

## RIG RAPTOR | RAPCR5

### FEATURES

- 1 13-Gauge Seamless HPPE, ANSI A4 cut resistant liner is comfortable for all day use.
- 2 TPR protects the back of hands from impact.
- 3 Reinforced forefinger and thumb patch for improved gripping strength.
- 4 Padded palm patch.
- 5 Sandy-foam nitrile coating is form fitting, flexible and provides excellent abrasion resistance with enhanced grip in wet and oily conditions.
- 6 Adjustable hook-and-loop closure provides a secure fit and helps prevent dirt and debris from entering the glove.

### PRODUCT SPECS

|                            |   |
|----------------------------|---|
| <b>Liner Material:</b>     | HPPE   Glass Fiber   Spandex   Nylon   High Strength Nylon                                      |
| <b>Liner Gauge:</b>        | 13  |
| <b>Liner Color:</b>        | Gray  |
| <b>Liner Construction:</b> | Seamless Machine Knit   |
| <b>Coating Material:</b>   | Nitrile   |
| <b>Coating Grip:</b>       | Sandy-Foam  |
| <b>Coating Color:</b>      | Black   |
| <b>Coating Coverage:</b>   | Palm & Finger   |
| <b>Cuff Type:</b>          | Knit Wrist  |
| <b>Reinforcement Type:</b> | Anti-Impact TPR Knuckle and Finger Guards, Padded Palm Patch, Reinforced Forefinger/Thumb Patch |
| <b>Anti-Static:</b>        | No  |
| <b>Touchscreen:</b>        | Yes   |
| <b>Flame Resistant:</b>    | No  |
| <b>Machine Washable:</b>   | Yes   |
| <b>Packaging:</b>          | 72PR   6DZ   1CS  |

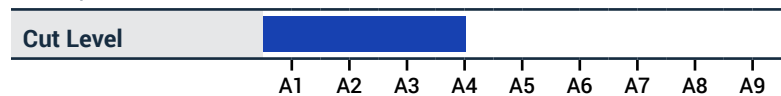
### APPLICATIONS

- Assembly
- Automotive Industry
- Metal Fabrication / Stamping
- Glass Manufacturing
- Utilities
- Aerospace
- Oil & Gas

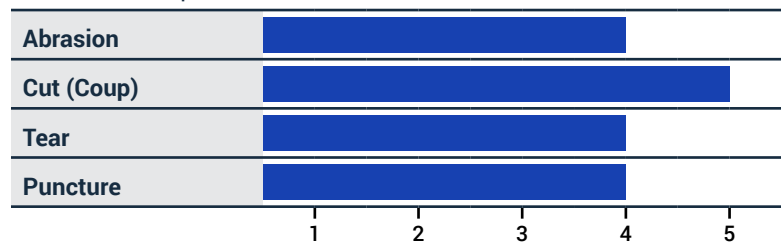


### PERFORMANCE

#### ANSI | ISEA 105-2016



#### EN388 : 2016 | 4544X



### ORDER NUMBERS

| Item Number | Pair         | Dozen          | Case           |
|-------------|--------------|----------------|----------------|
| RAPCR5-S    | 818187011319 | 10818187011316 | 20818187011313 |
| RAPCR5-M    | 818187011326 | 10818187011323 | 20818187011320 |
| RAPCR5-L    | 818187011333 | 10818187011330 | 20818187011337 |
| RAPCR5-XL   | 818187011340 | 10818187011347 | 20818187011344 |
| RAPCR5-2XL  | 818187011647 | 10818187011644 | 20818187011641 |

# CUT RESISTANT WORK GLOVES

## BLUWOLF® SERIES | BW4000

### FEATURES

- 1 18-Gauge ultra-lightweight blended HPPE liner provides ANSI A4 cut resistance and advanced tactile sensitivity.
- 2 Polyurethane coating provides a tactile grip in dry and slightly oily conditions, ideal for applications that require increased dexterity.
- 3 Knit wrist helps prevent dirt and debris from entering the glove.

### PRODUCT SPECS

|                            |  |
|----------------------------|--|
| <b>Liner Material:</b>     | HPPE   Glass Fiber   Steel   Spandex   Nylon   Polyester |
| <b>Liner Gauge:</b>        | 18   |
| <b>Liner Color:</b>        | Gray   |
| <b>Liner Construction:</b> | Seamless Machine Knit                                    |
| <b>Coating Material:</b>   | Polyurethane   |
| <b>Coating Grip:</b>       | Smooth   |
| <b>Coating Coverage:</b>   | Palm & Finger  |
| <b>Coating Color:</b>      | Gray   |
| <b>Cuff Type:</b>          | Knit Wrist   |
| <b>Reinforcement Type:</b> | None   |
| <b>Anti-Static:</b>        | No   |
| <b>Touchscreen:</b>        | Yes  |
| <b>Flame Resistant:</b>    | No   |
| <b>Machine Washable:</b>   | Yes  |
| <b>Packaging:</b>          | 120PR   10DZ   1CS                                       |

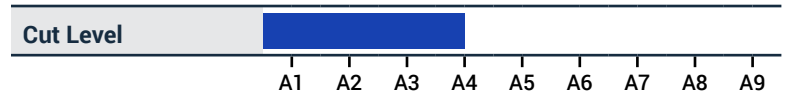
### APPLICATIONS

- Assembly
- Automotive industry
- Metal Fabrication / Stamping
- Glass Manufacturing
- Construction
- Utilities
- Aerospace
- Oil & Gas

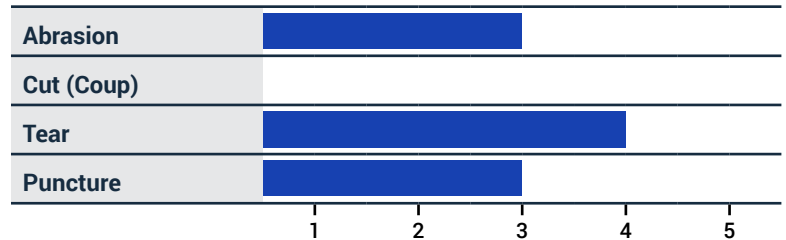


### PERFORMANCE

#### ANSI | ISEA 105-2016



#### EN388 : 2016 | 3X43D



### ORDER NUMBERS

| Item Number | Pair         | Dozen          | Case           |
|-------------|--------------|----------------|----------------|
| BW4000-S    | 818187013559 | 10818187013556 | 20818187013553 |
| BW4000-M    | 818187013566 | 10818187013563 | 20818187013560 |
| BW4000-L    | 818187013573 | 10818187013570 | 20818187013577 |
| BW4000-XL   | 818187013580 | 10818187013587 | 20818187013584 |
| BW4000-2XL  | 818187013597 | 10818187013594 | 20818187013591 |

# CUT RESISTANT WORK GLOVES

## BLUWOLF® SERIES | BW4010

### FEATURES

- 1 18-Gauge ultra-lightweight blended HPPE liner provides ANSI A4 cut resistance and advanced tactile sensitivity.
- 2 Low profile TPR protects back of hands from impact.
- 3 Polyurethane coating provides a tactile grip in dry and slightly oily conditions, ideal for applications that require increased dexterity.
- 4 Knit wrist helps prevent dirt and debris from entering the glove.

### PRODUCT SPECS

**Liner Material:** HPPE | Glass Fiber | Steel | Spandex | Nylon | Polyester

**Liner Gauge:** 18

**Liner Color:** Gray

**Liner Construction:** Seamless Machine Knit

**Coating Material:** Polyurethane

**Coating Grip:** Smooth

**Coating Coverage:** Palm & Finger

**Coating Color:** Gray

**Cuff Type:** Knit Wrist

**Reinforcement Type:** Stealth Low Profile TPR Knuckle and Finger Guards

**Anti-Static:** No

**Touchscreen:** Yes

**Flame Resistant:** No

**Machine Washable:** Yes

**Packaging:** 72PR | 6DZ | 1CS

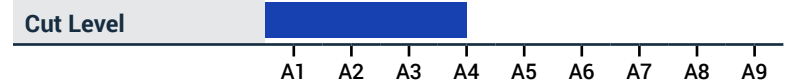
### APPLICATIONS

- Assembly
- Automotive Industry
- Metal Fabrication / Stamping
- Glass Manufacturing
- Construction
- Utilities
- Aerospace
- Oil & Gas

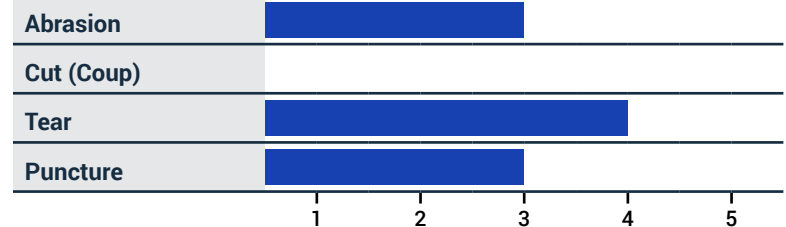


### PERFORMANCE

ANSI | ISEA 105-2016



EN388 : 2016 | 3X43D



### ORDER NUMBERS

| Item Number | Pair         | Dozen          | Case           |
|-------------|--------------|----------------|----------------|
| BW4010-S    | 818187013658 | 10818187013655 | 20818187013652 |
| BW4010-M    | 818187013665 | 10818187013662 | 20818187013669 |
| BW4010-L    | 818187013672 | 10818187013679 | 20818187013676 |
| BW4010-XL   | 818187013689 | 10818187013686 | 20818187013683 |
| BW4010-2XL  | 818187013696 | 10818187013693 | 20818187013690 |

# CUT RESISTANT WORK GLOVES

## BLUWOLF® SERIES | BW4040

### FEATURES

- 1 18-Gauge ultra-lightweight blended HPPE liner provides ANSI A4 cut resistance and advanced tactile sensitivity.
- 2 Ultra-thin micro-foam nitrile/polyurethane coating is soft, flexible and provides outstanding abrasion resistance and grip in wet, dry and oily conditions.
- 3 Knit wrist helps prevent dirt and debris from entering the glove.

### PRODUCT SPECS

|                            |  |
|----------------------------|--|
| <b>Liner Material:</b>     | HPPE   Glass Fiber   Steel   Spandex   Nylon   Polyester |
| <b>Liner Gauge:</b>        | 18   |
| <b>Liner Color:</b>        | Gray   |
| <b>Liner Construction:</b> | Seamless Machine Knit                                    |
| <b>Coating Material:</b>   | Nitrile   Water Based Polyurethane                       |
| <b>Coating Grip:</b>       | Ultra-Thin Micro-Foam                                    |
| <b>Coating Coverage:</b>   | Palm & Finger  |
| <b>Coating Color:</b>      | Gray   |
| <b>Cuff Type:</b>          | Knit Wrist   |
| <b>Reinforcement Type:</b> | None   |
| <b>Anti-Static:</b>        | No   |
| <b>Touchscreen:</b>        | Yes  |
| <b>Flame Resistant:</b>    | No   |
| <b>Machine Washable:</b>   | Yes  |
| <b>Packaging:</b>          | 120PR   10DZ   1CS                                       |

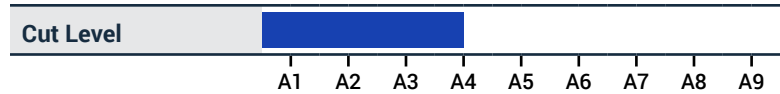
### APPLICATIONS

- Assembly
- Automotive Industry
- Metal Fabrication / Stamping
- Glass Manufacturing
- Utilities
- Aerospace
- Oil & Gas

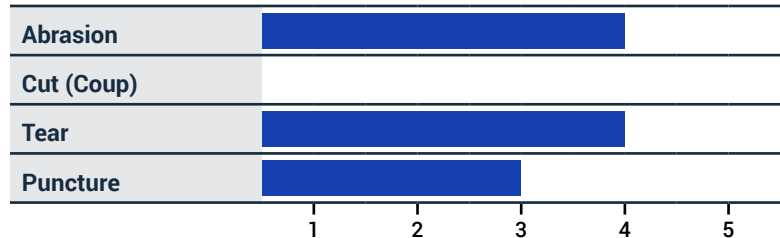


### PERFORMANCE

#### ANSI | ISEA 105-2016



#### EN388 : 2016 | 4X43D



### ORDER NUMBERS

| Item Number | Pair         | Dozen          | Case           |
|-------------|--------------|----------------|----------------|
| BW4040-S    | 818187014549 | 10818187014546 | 20818187014543 |
| BW4040-M    | 818187014556 | 10818187014553 | 20818187014550 |
| BW4040-L    | 818187014563 | 10818187014560 | 20818187014567 |
| BW4040-XL   | 818187014570 | 10818187014577 | 20818187014574 |
| BW4040-2XL  | 818187014587 | 10818187014584 | 20818187014581 |

# CUT RESISTANT WORK GLOVES

## BLUWOLF® SERIES | BW4050

### FEATURES

- 1 18-Gauge ultra-lightweight blended HPPE liner provides ANSI A4 cut resistance and advanced tactile sensitivity.
- 2 Ultra-thin micro-foam nitrile/polyurethane coating is soft, flexible and provides outstanding abrasion resistance and grip in wet, dry and oily conditions.
- 3 Low-profile TPR protects knuckles and back of hands from light impact.
- 4 Knit wrist helps prevent dirt and debris from entering the glove.

### PRODUCT SPECS

|                            |  |
|----------------------------|--|
| <b>Liner Material:</b>     | HPPE   Glass Fiber   Steel   Spandex   Nylon   Polyester |
| <b>Liner Gauge:</b>        | 18   |
| <b>Liner Color:</b>        | Gray   |
| <b>Liner Construction:</b> | Seamless Machine Knit                                    |
| <b>Coating Material:</b>   | Nitrile   Water Based Polyurethane                       |
| <b>Coating Grip:</b>       | Ultra-Thin Micro-Foam                                    |
| <b>Coating Coverage:</b>   | Palm & Finger  |
| <b>Coating Color:</b>      | Gray   |
| <b>Cuff Type:</b>          | Knit Wrist   |
| <b>Reinforcement Type:</b> | TPR Knuckle & Finger Guards                              |
| <b>Anti-Static:</b>        | No   |
| <b>Touchscreen:</b>        | Yes  |
| <b>Flame Resistant:</b>    | No   |
| <b>Machine Washable:</b>   | Yes  |
| <b>Packaging:</b>          | 120PR   10DZ   1CS                                       |

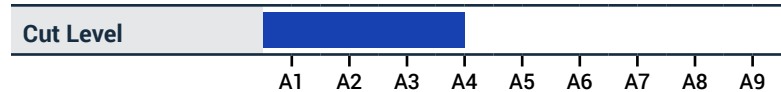
### APPLICATIONS

- Assembly
- Automotive Industry
- Metal Fabrication / Stamping
- Glass Manufacturing
- Utilities
- Aerospace
- Oil & Gas

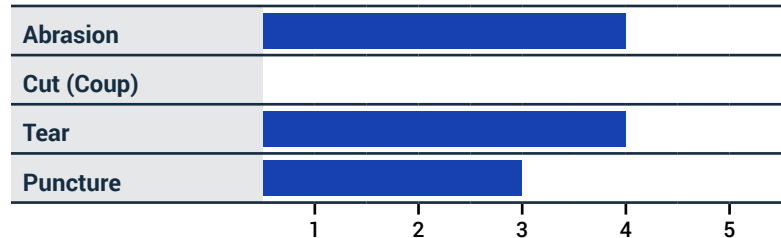


### PERFORMANCE

#### ANSI | ISEA 105-2016



#### EN388 : 2016 | 4X43D



### ORDER NUMBERS

| Item Number | Pair         | Dozen          | Case           |
|-------------|--------------|----------------|----------------|
| BW4050-S    | 818187014594 | 10818187014591 | 20818187014598 |
| BW4050-M    | 818187014600 | 10818187014607 | 20818187014604 |
| BW4050-L    | 818187014617 | 10818187014614 | 20818187014611 |
| BW4050-XL   | 818187014624 | 10818187014621 | 20818187014628 |
| BW4050-2XL  | 818187014631 | 10818187014638 | 20818187014635 |



# CUT RESISTANT WORK GLOVES

## BLUWOLF® SERIES | BW4060

### FEATURES

- 1 18-Gauge ultra-lightweight blended HPPE liner provides ANSI A4 cut resistance and advanced tactile sensitivity.
- 2 Micro-foam, nitrile/polyurethane coating is soft, flexible and provides outstanding abrasion resistance and grip in wet, dry and oily conditions.
- 3 Knit wrist helps prevent dirt and debris from entering the glove.

### PRODUCT SPECS

|                            |  |
|----------------------------|--|
| <b>Liner Material:</b>     | HPPE   Glass Fiber   Steel   Spandex   Nylon   Polyester |
| <b>Liner Gauge:</b>        | 18   |
| <b>Liner Color:</b>        | Gray   |
| <b>Liner Construction:</b> | Seamless Machine Knit                                    |
| <b>Coating Material:</b>   | Nitrile   Water Based Polyurethane                       |
| <b>Coating Grip:</b>       | Micro-Foam   |
| <b>Coating Coverage:</b>   | Palm & Finger  |
| <b>Coating Color:</b>      | Gray   |
| <b>Cuff Type:</b>          | Knit Wrist   |
| <b>Reinforcement Type:</b> | None   |
| <b>Anti-Static:</b>        | No   |
| <b>Touchscreen:</b>        | Yes  |
| <b>Flame Resistant:</b>    | No   |
| <b>Machine Washable:</b>   | Yes  |
| <b>Packaging:</b>          | 72PR   6DZ   1CS   |

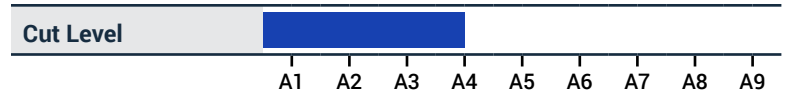
### APPLICATIONS

- Assembly
- Automotive Industry
- Metal Fabrication / Stamping
- Glass Manufacturing
- Utilities
- Aerospace
- Oil & Gas

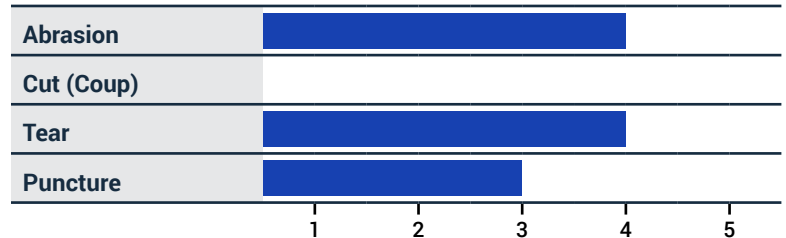


### PERFORMANCE

#### ANSI | ISEA 105-2016



#### EN388 : 2016 | 4X43D



### ORDER NUMBERS

| Item Number | Pair         | Dozen          | Case           |
|-------------|--------------|----------------|----------------|
| BW4060-S    | 818187014648 | 10818187014645 | 20818187014642 |
| BW4060-M    | 818187014655 | 10818187014652 | 20818187014659 |
| BW4060-L    | 818187014662 | 10818187014669 | 20818187014666 |
| BW4060-XL   | 818187014679 | 10818187014676 | 20818187014673 |
| BW4060-2XL  | 818187014686 | 10818187014683 | 20818187014680 |

# CUT RESISTANT WORK GLOVES

## BLUWOLF® SERIES | BW4080

### FEATURES

- 1 18-Gauge ultra-lightweight blended HPPE liner provides ANSI A4 cut resistance and advanced tactile sensitivity.
- 2 Sandy-foam nitrile coatings are form fitting, flexible and provide excellent abrasion resistance as well as enhanced grip in wet and oily conditions.
- 3 Knit wrist helps prevent dirt and debris from entering the glove.

### PRODUCT SPECS

|                            |  |
|----------------------------|--|
| <b>Liner Material:</b>     | HPPE   Glass Fiber   Steel   Spandex   Nylon   Polyester |
| <b>Liner Gauge:</b>        | 18   |
| <b>Liner Color:</b>        | Gray   |
| <b>Liner Construction:</b> | Seamless Machine Knit                                    |
| <b>Coating Material:</b>   | Nitrile  |
| <b>Coating Grip:</b>       | Sandy-Foam   |
| <b>Coating Coverage:</b>   | Palm & Finger  |
| <b>Coating Color:</b>      | Black  |
| <b>Cuff Type:</b>          | Knit Wrist   |
| <b>Reinforcement Type:</b> | None   |
| <b>Anti-Static:</b>        | No   |
| <b>Touchscreen:</b>        | Yes  |
| <b>Flame Resistant:</b>    | No   |
| <b>Machine Washable:</b>   | Yes  |
| <b>Packaging:</b>          | 72PR   6DZ   1CS   |

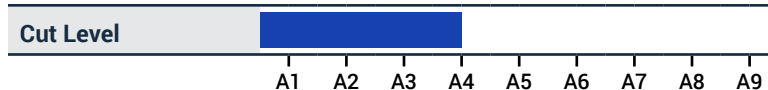
### APPLICATIONS

- Assembly
- Automotive Industry
- Metal Fabrication / Stamping
- Glass Manufacturing
- Utilities
- Aerospace
- Oil & Gas

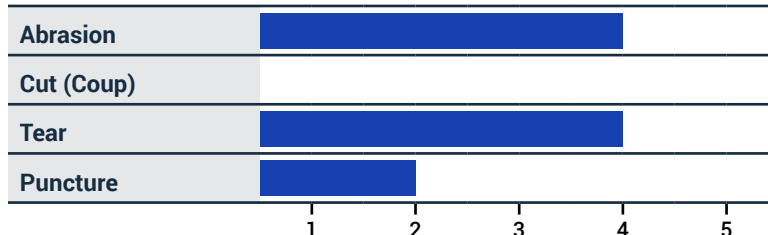


### PERFORMANCE

#### ANSI | ISEA 105-2016



#### EN388 : 2016 | 4X42D



### ORDER NUMBERS

| Item Number | Pair         | Dozen          | Case           |
|-------------|--------------|----------------|----------------|
| BW4080-S    | 818187015836 | 10818187015833 | 20818187015830 |
| BW4080-M    | 818187015843 | 10818187015840 | 20818187015847 |
| BW4080-L    | 818187015850 | 10818187015857 | 20818187015854 |
| BW4080-XL   | 818187015867 | 10818187015864 | 20818187015861 |
| BW4080-2XL  | 818187015874 | 10818187015871 | 20818187015878 |

# CUT RESISTANT WORK GLOVES

## BLUWOLF® SERIES | BW4090

### FEATURES

- 1 18-Gauge ultra-lightweight blended HPPE liner provides ANSI A4 cut resistance and advanced tactile sensitivity.
- 2 Sandy-foam nitrile coatings are form fitting, flexible and provide excellent abrasion resistance as well as enhanced grip in wet and oily conditions.
- 3 Low-profile TPR protects knuckles and back of hands from light impact.
- 4 Knit wrist helps prevent dirt and debris from entering the glove.

### PRODUCT SPECS

|                     |  |
|---------------------|--|
| Liner Material:     | HPPE   Glass Fiber   Steel   Spandex   Nylon   Polyester |
| Liner Gauge:        | 18   |
| Liner Color:        | Gray   |
| Liner Construction: | Seamless Machine Knit                                    |
| Coating Material:   | Nitrile  |
| Coating Grip:       | Sandy-Foam   |
| Coating Coverage:   | Palm & Finger  |
| Coating Color:      | Black  |
| Cuff Type:          | Knit Wrist   |
| Reinforcement Type: | TPR Knuckle & Finger Guards                              |
| Anti-Static:        | No   |
| Touchscreen:        | Yes  |
| Flame Resistant:    | No   |
| Machine Washable:   | Yes  |
| Packaging:          | 72PR   6DZ   1CS   |

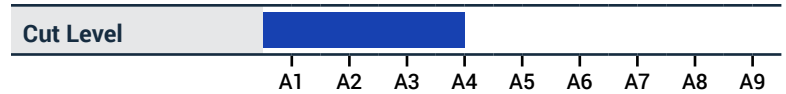
### APPLICATIONS

- Assembly
- Automotive Industry
- Metal Fabrication / Stamping
- Glass Manufacturing
- Utilities
- Aerospace
- Oil & Gas

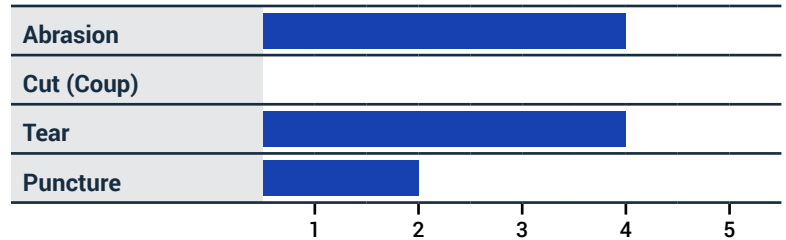


### PERFORMANCE

#### ANSI | ISEA 105-2016



#### EN388 : 2016 | 4X42D



### ORDER NUMBERS

| Item Number | Pair         | Dozen          | Case           |
|-------------|--------------|----------------|----------------|
| BW4090-S    | 818187015881 | 10818187015888 | 20818187015885 |
| BW4090-M    | 818187015898 | 10818187015895 | 20818187015892 |
| BW4090-L    | 818187015904 | 10818187015901 | 20818187015908 |
| BW4090-XL   | 818187015911 | 10818187015918 | 20818187015915 |
| BW4090-2XL  | 818187015928 | 10818187015925 | 20818187015922 |

# CUT RESISTANT WORK GLOVES

## BLUWOLF® SERIES | BW5000

### FEATURES

- 1 13-Gauge Seamless HPPE, ANSI A5 cut-resistant liner is comfortable for all day use.
- 2 Sandy-foam nitrile coating is form fitting, flexible and provides excellent abrasion resistance with enhanced grip in wet and oily conditions.
- 3 Knit wrist helps prevent dirt and debris from entering the glove.

### PRODUCT SPECS

|                            |  |
|----------------------------|--|
| <b>Liner Material:</b>     | HPPE   Glass Fiber   Steel   Spandex   Nylon   High Strength Nylon |
| <b>Liner Gauge:</b>        | 13   |
| <b>Liner Color:</b>        | Gray   |
| <b>Liner Construction:</b> | Seamless Machine Knit  |
| <b>Coating Material:</b>   | Nitrile  |
| <b>Coating Grip:</b>       | Sandy-Foam   |
| <b>Coating Coverage:</b>   | Palm & Finger  |
| <b>Coating Color:</b>      | Black  |
| <b>Cuff Type:</b>          | Knit Wrist   |
| <b>Reinforcement Type:</b> | None   |
| <b>Anti-Static:</b>        | No   |
| <b>Touchscreen:</b>        | Yes  |
| <b>Flame Resistant:</b>    | No   |
| <b>Machine Washable:</b>   | Yes  |
| <b>Packaging:</b>          | 72PR   6DZ   1CS   |

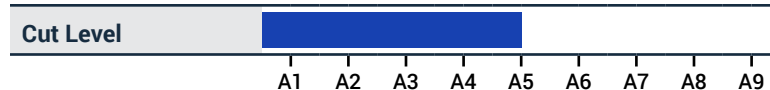
### APPLICATIONS

- Assembly
- Automotive Industry
- Metal Fabrication / Stamping
- Glass Manufacturing
- Utilities
- Aerospace
- Oil & Gas

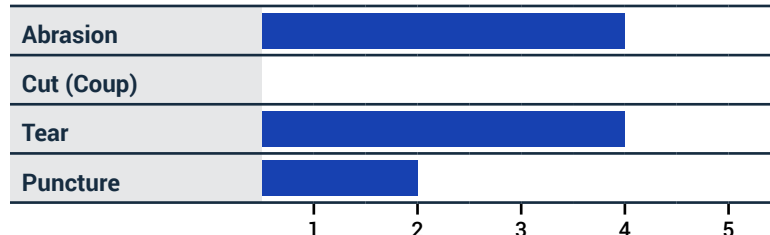


### PERFORMANCE

#### ANSI | ISEA 105-2016



#### EN388 : 2016 | 4X42E



### ORDER NUMBERS

| Item Number | Pair         | Dozen          | Case           |
|-------------|--------------|----------------|----------------|
| BW5000-S    | 818187013405 | 10818187013402 | 20818187013409 |
| BW5000-M    | 818187013436 | 10818187013433 | 20818187013430 |
| BW5000-L    | 818187013443 | 10818187013440 | 20818187013447 |
| BW5000-XL   | 818187013450 | 10818187013457 | 20818187013454 |
| BW5000-2XL  | 818187013467 | 10818187013464 | 20818187013461 |

# WINTER WORK GLOVES

## AZUSA SAFETY | LW1010

7-Gauge Seamless Lime Acrylic Winter Glove with Brushed Fleece Interior and Blue Crinkle-Latex

### FEATURES

- 1 Heavyweight warm glove for winter use.
- 2 Crinkle-latex coating provides superior grip in wet and dry conditions as well as excellent abrasion resistance. Coating is designed to channel fluids away allowing better contact on wet surfaces.
- 3 The 3/4 dip palm and coated fingers helps prevent water and cold air from permeating the glove.
- 4 Hi-Vis color makes these gloves easy to see.
- 5 Knit wrist helps prevent dirt and debris from entering the glove.

### PRODUCT SPECS

Liner Material: Thermal Acrylic

Liner Gauge: 7

Liner Color: Hi-Vis Lime

Liner Construction: Seamless Machine Knit

Coating Material: Latex

Coating Grip: Crinkle

Coating Coverage: 3/4

Coating Color: Blue

Cuff Type: Knit Wrist

Reinforcement Type: None

Anti-Static: No

Touchscreen: No

Flame Resistant: No

Machine Washable: Yes

Packaging: 120PR | 10DZ | 1CS

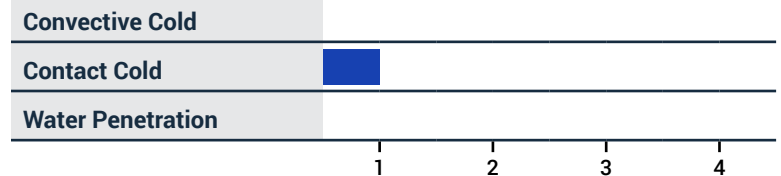
### APPLICATIONS

- Refrigerated Areas
- Utilities
- Commercial Fishing
- Construction
- Snow Removal
- Outdoor winter activities and recreation

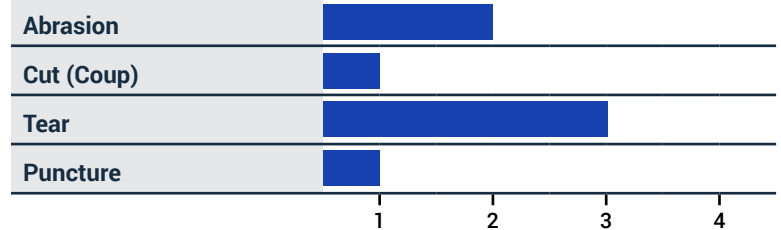


### PERFORMANCE

EN511 : 2006 | X1X



EN388 : 2016 | 2131X



### ORDER NUMBERS

| Item Number | Pair         | Dozen          | Case           |
|-------------|--------------|----------------|----------------|
| LW1010-M    | 818187014754 | 10818187014751 | 20818187014758 |
| LW1010-L    | 818187014761 | 10818187014768 | 20818187014765 |
| LW1010-XL   | 818187014778 | 10818187014775 | 20818187014772 |
| LW1010-2XL  | 818187014785 | 10818187014782 | 20818187014789 |

# WINTER WORK GLOVES

## AZUSA SAFETY | LW1020

7-Gauge Seamless Lime Acrylic Winter Glove with Brushed Fleece Interior and Dark Blue Foam-Latex

### FEATURES

- 1 Heavyweight warm glove for winter use.
- 2 Foam-latex coating provides superior grip in wet and dry conditions.
- 3 The 3/4 dip palm and coated fingers helps prevent water and cold air from permeating the glove.
- 4 Hi-Vis coloring makes these gloves easy to see.
- 5 Knit wrist helps prevent dirt and debris from entering the glove.

### PRODUCT SPECS

**Liner Material:** Thermal Acrylic

**Liner Gauge:** 7

**Liner Color:** Hi-Vis Lime

**Liner Construction:** Seamless Machine Knit

**Coating Material:** Latex

**Coating Grip:** Foam

**Coating Coverage:** 3/4

**Coating Color:** Blue

**Cuff Type:** Knit Wrist

**Reinforcement Type:** None

**Anti-Static:** No

**Touchscreen:** No

**Flame Resistant:** No

**Machine Washable:** Yes

**Packaging:** 120PR | 10DZ | 1CS

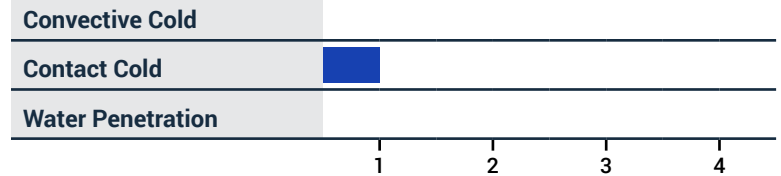
### APPLICATIONS

- Refrigerated Areas
- Utilities
- Commercial Fishing
- Construction
- Snow Removal
- Outdoor winter activities and recreation

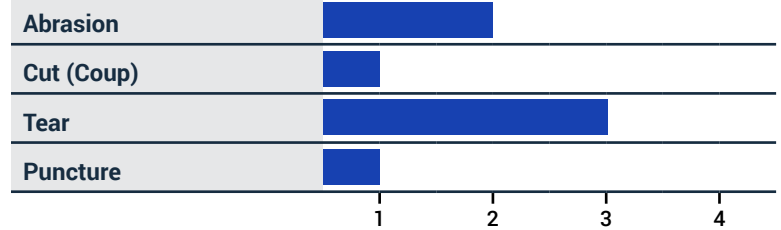


### PERFORMANCE

EN511 : 2006 | X1X



EN388 : 2016 | 2131X



### ORDER NUMBERS

| Item Number | Pair         | Dozen          | Case           |
|-------------|--------------|----------------|----------------|
| LW1020-M    | 818187014792 | 10818187014799 | 20818187014796 |
| LW1020-L    | 818187014808 | 10818187014805 | 20818187014802 |
| LW1020-XL   | 818187014815 | 10818187014812 | 20818187014819 |
| LW1020-2XL  | 818187014822 | 10818187014829 | 20818187014826 |

# WINTER WORK GLOVES

## AZUSA SAFETY | LW1030

7-Gauge Seamless Black Acrylic Winter Glove with Brushed Fleece Interior and Black Foam-Latex

### FEATURES

- 1 Heavyweight warm glove for winter use.
- 2 Foam-latex coating provides superior grip in wet and dry conditions.
- 3 The 3/4 dip palm and coated fingers helps prevent water and cold air from permeating the glove.
- 4 Knit wrist helps prevent dirt and debris from entering the glove.

### PRODUCT SPECS

Liner Material: Thermal Acrylic

Liner Gauge: 7

Liner Color: Black

Liner Construction: Seamless Machine Knit

Coating Material: Latex

Coating Grip: Foam

Coating Coverage: 3/4

Coating Color: Blue

Cuff Type: Knit Wrist

Reinforcement Type: None

Anti-Static: No

Touchscreen: No

Flame Resistant: No

Machine Washable: Yes

Packaging: 120PR | 10DZ | 1CS

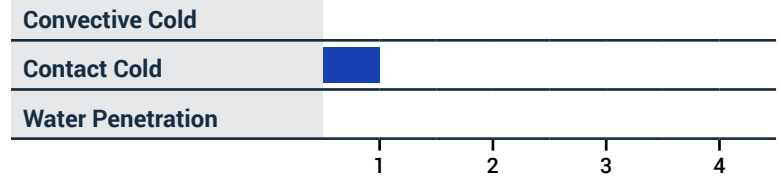
### APPLICATIONS

- Refrigerated Areas
- Utilities
- Commercial Fishing
- Construction
- Snow Removal
- Outdoor winter activities and recreation

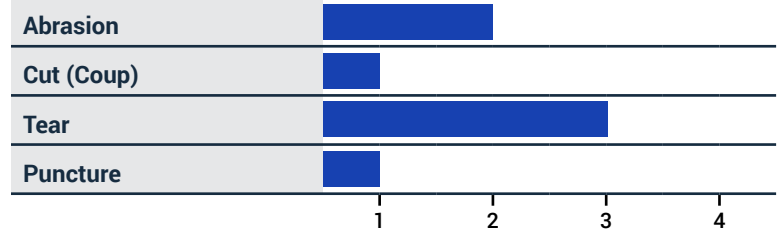


### PERFORMANCE

#### EN511 : 2006 | X1X



#### EN388 : 2016 | 2131X



### ORDER NUMBERS

| Item Number | Pair         | Dozen          | Case           |
|-------------|--------------|----------------|----------------|
| LW1030-M    | 818187014839 | 10818187014836 | 20818187014833 |
| LW1030-L    | 818187014846 | 10818187014843 | 20818187014840 |
| LW1030-XL   | 818187014853 | 10818187014850 | 20818187014857 |
| LW1030-2XL  | 818187014860 | 10818187014867 | 20818187014864 |

# WINTER WORK GLOVES

## AZUSA SAFETY | 27-1070

10-Gauge Seamless Lime Winter Acrylic Glove with Brushed Fleece Interior and Black 3/4 Sandy-Foam Latex Coating

### FEATURES

- 1 Medium weight, warm glove for winter use.
- 2 Sandy-foam latex coating provides superior grip in wet and dry conditions.
- 3 The 3/4 dip palm and coated fingers helps prevent water and cold air from permeating the glove.
- 4 Hi-Vis color makes these gloves easy to see.
- 5 Knit wrist helps prevent dirt and debris from entering the glove .

### PRODUCT SPECS

**Liner Material:** Thermal Acrylic

**Liner Gauge:** 10

**Liner Color:** Hi-Vis Lime

**Liner Construction:** Seamless Machine Knit

**Coating Material:** Latex

**Coating Grip:** Sandy-Foam

**Coating Coverage:** 3/4

**Coating Color:** Black

**Cuff Type:** Knit Wrist

**Reinforcement Type:** None

**Anti-Static:** No

**Touchscreen:** No

**Flame Resistant:** No

**Machine Washable:** Yes

**Packaging:** 120PR | 10DZ | 1CS

### APPLICATIONS

- Refrigerated Areas
- Utilities
- Commercial Fishing
- Construction
- Snow Removal
- Outdoor winter activities and recreation

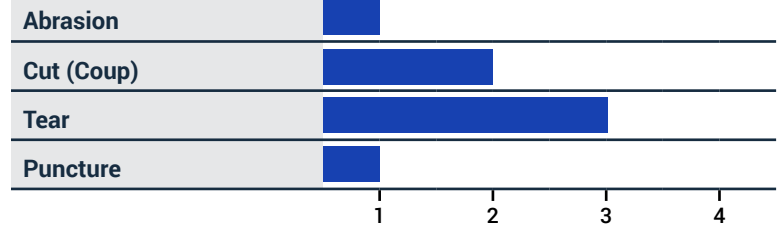


### PERFORMANCE

EN511 : 2006 | X1X



EN388 : 2016 | 1231X



### ORDER NUMBERS

| Item Number  | Pair | Dozen | Case |
|--------------|------|-------|------|
| 27-1070-S/M  |      |       |      |
| 27-1070-L/XL |      |       |      |



# WINTER WORK GLOVES

## AZUSA SAFETY | 27-1080

10-Gauge Seamless Black Winter Acrylic Glove with Brushed Fleece Interior and Black 3/4 Sandy-Foam Latex Coating

### FEATURES

- 1 Medium weight, warm glove for winter use.
- 2 Sandy-foam latex coating provides superior grip in wet and dry conditions.
- 3 The 3/4 dip palm and coated fingers helps prevent water and cold air from permeating the glove
- 4 Knit wrist helps prevent dirt and debris from entering the glove.

### PRODUCT SPECS

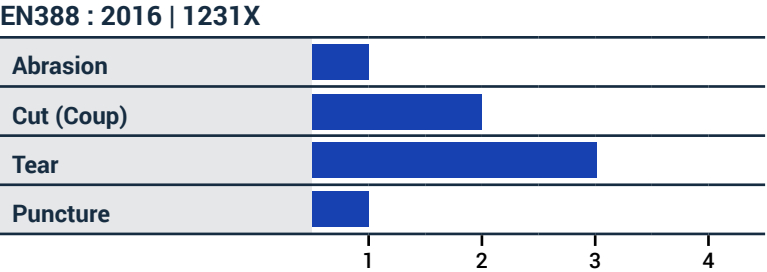
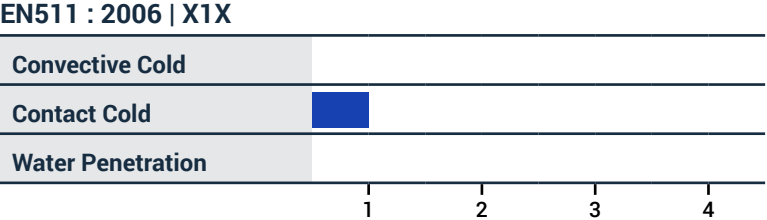
|                     |                       |
|---------------------|-----------------------|
| Liner Material:     | Thermal Acrylic       |
| Liner Gauge:        | 10                    |
| Liner Color:        | Black                 |
| Liner Construction: | Seamless Machine Knit |
| Coating Material:   | Latex                 |
| Coating Grip:       | Sandy-Foam            |
| Coating Coverage:   | 3/4                   |
| Coating Color:      | Black                 |
| Cuff Type:          | Knit Wrist            |
| Reinforcement Type: | None                  |
| Anti-Static:        | No                    |
| Touchscreen:        | No                    |
| Flame Resistant:    | No                    |
| Machine Washable:   | Yes                   |
| Packaging:          | 120PR   10DZ   1CS    |

### APPLICATIONS

- Cold Storage
- Manufacturing
- Construction
- Maintenance & Repair
- Snow Removal
- Home Improvement
- Material Handling
- Outdoor winter activities and recreation



### PERFORMANCE



### ORDER NUMBERS

| Item Number  | Pair | Dozen | Case |
|--------------|------|-------|------|
| 27-1080-S/M  |      |       |      |
| 27-1080-L/XL |      |       |      |

# DISPOSABLE GLOVES

## AZUSA SAFETY | ND4020

4-Mil Black Disposable Nitrile Exam Gloves | Powder-Free | Ambidextrous | Single-Use | Food Safe

### FEATURES

- 1 First-rate dexterity and tactile sensitivity.
- 2 Textured fingertips for improved grip.
- 3 Contains no natural rubber latex proteins
- 4 FDA approved for medical use (not sterile).
- 5 Food preparation and processing approved.
- 6 Beaded cuff adds additional strength to cuff edge for longer glove life, easier donning and helps prevent liquid run-off.

### PRODUCT SPECS

|                         |   |
|-------------------------|---|
| Dimensions              | 9.5" in length, 4-Mil at palm, 4.5 gram weight  |
| Quantity                | Packed 100 gloves per box   10 boxes per case   |
| Tensile Strength        | 14 MPa min  |
| Tensile Strength (Aged) | 14 MPa min  |
| Elongation              | 500%  |
| Elongation (Aged)       | 400%  |
| Product Standards       | ASTM 6319-00   EN455 Parts 1,2,3 and 4, US FDA Quality System Regulation (QSR), FDA 510(k) / MDL - K133168 / D211259   EN1186, CEN/TS 14234 |
| AQL Level               | 1.5   |
| Shelf Life              | 5 years   |

### APPLICATIONS

- Medical, First Aid and Security
- Assembly and Inspection
- Industrial and Food Equipment Maintenance/Repair
- Painting and Printing
- Automotive Applications
- Food Processing and Preparation



### TECHNICAL SPECS

| Weight              | Width                |
|---------------------|----------------------|
| Small: 3.5g ±0.5g   | Small: 85mm ± 5mm    |
| Medium: 4.0g ±0.5g  | Medium: 95mm ± 5mm   |
| Large: 4.5g ±0.5g   | Large: 105mm ± 5mm   |
| X-Large: 5.0g ±0.5g | X-Large: 115mm ± 5mm |

### ORDER NUMBERS

| Item Number | Box          | Case           |
|-------------|--------------|----------------|
| ND4020-S    | 818187015270 | 10818187015277 |
| ND4020-M    | 818187015287 | 10818187015284 |
| ND4020-L    | 818187015294 | 10818187015291 |
| ND4020-XL   | 818187015300 | 10818187015307 |

# DISPOSABLE GLOVES

## AZUSA SAFETY | ND6020

6-Mil Premium Black Disposable Nitrile Gloves | Powder-Free | Ambidextrous | Single-Use | Food Safe

### FEATURES

- 1 First-rate dexterity and tactile sensitivity.
- 2 Fully textured for enhanced grip in wet and dry conditions.
- 3 Exceptional abrasion, tear and puncture resistance.
- 4 Contains no natural rubber latex proteins.
- 5 Food preparation and processing approved.
- 6 Not for medical use.
- 7 Beaded cuff adds additional strength to cuff edge for longer glove life, easier donning and helps prevent liquid run-off.

### PRODUCT SPECS

|                         |  |
|-------------------------|--|
| Dimensions              | 9.5" in length, 6-Mil at palm, 6.7 gram weight |
| Quantity                | Packed 100 gloves per box   10 boxes per case  |
| tensile Strength        | 21 MPa min                                     |
| Tensile Strength (Aged) | 21 MPa min                                     |
| Elongation              | 500%   |
| Elongation (Aged)       | 450%   |
| Product Standards       | ASTM 6319-00   EN455 Parts 1 and 2             |
| US FDA 21 CFR 177.2600  | 1.5  |
|                         | 5 years  |
| AQL Level               | 1.5  |
| Shelf Life              | 5 years  |

### APPLICATIONS

- Food Processing, Preparation & Equipment Maintenance
- Inspection
- Assembly
- Equipment Maintenance and Repair
- Painting and Printing
- Automotive Applications
- Security



### TECHNICAL SPECS

| Weight               | Width                 |
|----------------------|-----------------------|
| Small: 5.9g ±0.5g    | Small: 85mm ± 5mm     |
| Medium: 6.3g ±0.5g   | Medium: 95mm ± 5mm    |
| Large: 6.7g ±0.5g    | Large: 105mm ± 5mm    |
| X-Large: 7.2g ±0.5g  | X-Large: 115mm ± 5mm  |
| 2X-Large: 7.7g ±0.5g | 2X-Large: 120mm ± 5mm |

### ORDER NUMBERS

| Item Number | Box          | Case           |
|-------------|--------------|----------------|
| ND6020-S    | 818187015232 | 10818187015239 |
| ND6020-M    | 818187015249 | 10818187015246 |
| ND6020-L    | 818187015256 | 10818187015253 |
| ND6020-XL   | 818187015263 | 10818187015260 |
| ND6020-2XL  | 818187015317 | 10818187015314 |

# LEATHER GLOVES

## AZUSA SAFETY | S96112

Top Grain Cowhide Double Leather Palm Gloves

### FEATURES

- 1 Reinforced leather knuckle and fingertips for added protection
- 2 Extremely durable and abrasion resistant
- 3 Reinforced inner split palm layer for increased protection and glove longevity
- 4 Rubberized safety cuff provides additional wrist protection

### PRODUCT SPECS

**Sizes:** Large and X-Large

**Color:** Blue

**Packaging:** Bulk Pack

**Hide:** Split Cowhide

**Grade:** Economy

**Palm:** Double

**Cuff:** Safety

**Back:** Canvas

**Thumb Type:** Wing

**Stitching:** Nylon



### ORDER NUMBERS

| Item Number | Pair         | Dozen          | Case           |
|-------------|--------------|----------------|----------------|
| S96112-L    | 818187010411 | 10818187010418 | 20818187010415 |
| S96112-XL   | 818187010428 | 10818187010425 | 20818187010422 |

### APPLICATIONS

- Maintenance
- Farming
- Metal Working
- Construction

## AZUSA SAFETY | S96115

Top Grain Cowhide Leather Palm Gloves

### FEATURES

- 1 Reinforced leather knuckle and fingertips for added protection
- 2 Extremely durable and abrasion resistant
- 3 Rubberized safety cuff provides additional wrist protection

### PRODUCT SPECS

Sizes: Large and X-Large

Color: Blue

Packaging: Bulk Pack

Hide: Split Cowhide

Grade: Economy

Palm: Single

Cuff: Safety

Back: Canvas

Thumb Type: Wing

Stitching: Nylon

### APPLICATIONS

- Maintenance
- Farming
- Metal Working
- Construction



### ORDER NUMBERS

| Item Number | Pair         | Dozen          | Case           |
|-------------|--------------|----------------|----------------|
| S96115-L    | 818187010350 | 10818187010357 | 20818187010354 |
| S96115-XL   | 818187010374 | 10818187010371 | 20818187010378 |

# LEATHER GLOVES

## AZUSA SAFETY | S96118

Top Grain Cowhide Double Leather Palm Gloves with Reinforced Kevlar® Stitching

### FEATURES

- 1 Reinforced leather knuckle and fingertips for added protection
- 2 Extremely durable and abrasion resistant
- 3 Reinforced inner split palm layer for increased protection and glove longevity
- 4 Kevlar stitching adds an extra measure of durability
- 5 Rubberized safety cuff provides additional wrist protection

### PRODUCT SPECS

**Sizes:** Large, X-Large and 2X-Large

**Color:** Orange

**Packaging:** Bulk Pack

**Hide:** Split Cowhide

**Grade:** Standard

**Palm:** Double

**Cuff:** Safety

**Back:** Canvas

**Thumb Type:** Wing

**Stitching:** Aramid



### ORDER NUMBERS

| Item Number | Pair         | Dozen          | Case           |
|-------------|--------------|----------------|----------------|
| F92112A-S   | 818187011715 | 10818187011712 | 20818187011719 |
| F92112A-M   | 818187011722 | 10818187011729 | 20818187011726 |
| F92112A-L   | 818187010640 | 10818187010647 | 20818187010644 |
| F92112A-XL  | 818187010657 | 10818187010654 | 20818187010651 |

### APPLICATIONS

- Maintenance
- Farming
- Metal Working
- Construction

## AZUSA SAFETY | F92112A

Top Grain Leather Drivers Gloves with a Keystone Thumb

### FEATURES

- 1 Keystone thumb for improved dexterity and wear
- 2 Cinched back for added comfort and a snug and secure fit
- 3 Extremely durable and abrasion resistant

### PRODUCT SPECS

|             |                   |
|-------------|-------------------|
| Sizes:      | Medium - 2XL      |
| Color:      | Natural           |
| Packaging:  | Bulk Pack         |
| Hide:       | Top Grain Cowhide |
| Grade:      | Premium           |
| Cuff:       | Slip-On           |
| Thumb Type: | Straight          |
| Stitching:  | Aramid            |

### APPLICATIONS

- Equipment Operation
- Maintenance
- Farming
- Utility Work
- Construction



### ORDER NUMBERS

| Item Number | Pair         | Dozen          | Case           |
|-------------|--------------|----------------|----------------|
| F92112A-M   | 818187011722 | 10818187011729 | 20818187011726 |
| F92112A-L   | 818187010640 | 10818187010647 | 20818187010644 |
| F92112A-XL  | 818187010657 | 10818187010654 | 20818187010651 |
| F92112A-2XL | 818187014501 | 10818187014508 | 20818187014505 |

# LEATHER GLOVES

## WELDERBEAST | WHYBRID

Top grain Goatskin Leather, Hybrid Welding Gloves with Reinforced Kevlar Stitching and 9" Split Leather FlexCuff

### FEATURES

- 1 Top grain goatskin leather palm is soft and comfortable for all day wear
- 2 Abrasion-resistant and recommended for applications requiring tactile sensitivity
- 3 Aramid Stitching adds strength and heat resistance
- 4 Specially formulated Max Heat Shield overlays enhance heat protection
- 5 Patent-pending side shield adds additional protection in harsh work conditions
- 6 Split leather 9" FlexCuff protects forearm and can be folded or cut for customized length
- 7 Elasticized at cuff to help keep out debris

### PRODUCT SPECS

Sizes: Medium, Large, X-Large, 2X-Large

Color: Natural/Yellow

Packaging: 36PR | 3DZ | 1CS

Hide: Goatskin

Grade: Premium

Palm: Reinforced Palm

Cuff: 9" Flex Cuff

Thumb Type: Keystone

Stitching: Aramid

### APPLICATIONS

- Mig
- Tig
- Stick Welding



### ORDER NUMBERS

| Item Number | Pair         | Dozen          | Case           |
|-------------|--------------|----------------|----------------|
| WHYBRID-M   | 818187012057 | 10818187012054 | 20818187012051 |
| WHYBRID-L   | 818187012064 | 10818187012061 | 20818187012068 |
| WHYBRID-XL  | 818187012071 | 10818187012078 | 20818187012075 |
| WHYBRID-2XL | 818187012224 | 10818187012221 | 20818187012228 |

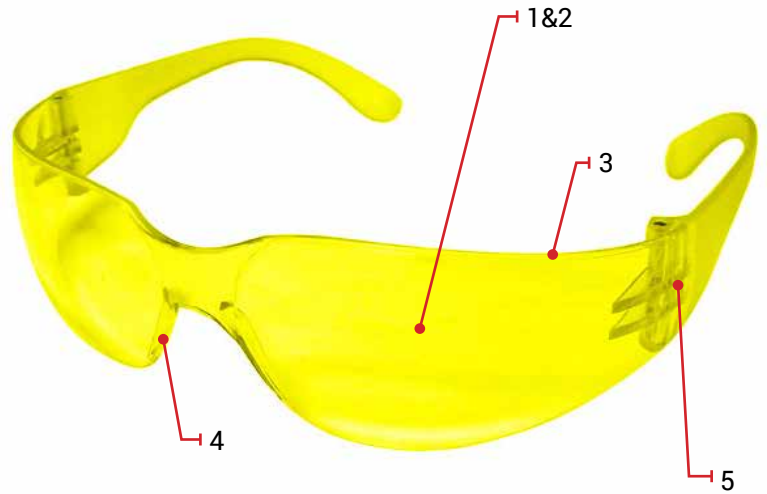


## CRUISER | CLASSIC OR ANTI-FOG

Polycarbonate Safety Glasses with Anti-Scratch / Anti-UV Coating and Molded Nose Piece

### FEATURES

- 1 99.9% UV protection
- 2 Anti-impact lens
- 3 Lightweight polycarbonate, rimless design provides consistent comfort
- 4 Universal molded nose bridge ensures comfort for a variety of wearers
- 5 Flexible temples provide a secure and comfortable fit
- 6 Designed for a unisex fit
- 7 Available in Classic or Anti-Fog



### PRODUCT SPECS

|                        |                               |
|------------------------|-------------------------------|
| <b>Lens Colors :</b>   | Clear, Outdoor (Black), Amber |
| <b>Lens Coatings:</b>  | Anti-Scratch   Anti-Fog       |
| <b>Frame Style:</b>    | Rimless                       |
| <b>Frame Material:</b> | Polycarbonate                 |
| <b>Bridge:</b>         | Molded                        |
| <b>Style:</b>          | Classic   Anti-Fog            |
| <b>Certifications:</b> | ANSI Z87.1+, TAA Compliant    |

### APPLICATIONS

- General Manufacturing
- Construction

### ORDER NUMBERS

| Item Number     | Color | Pair         | Dozen          | Case           |
|-----------------|-------|--------------|----------------|----------------|
| <b>Classic</b>  |       |              |                |                |
| CRUISER-A-001   | Amber | 818187012644 | 10818187012641 | 20818187012648 |
| CRUISER-O-001   | Black | 818187012651 | 10818187012658 | 20818187012655 |
| CRUISER-C-001   | Clear | 818187012637 | 10818187012637 | 20818187012631 |
| <b>Anti-Fog</b> |       |              |                |                |
| CRUISER-AAF-001 | Amber | 818187012675 | 10818187012672 | 20818187012679 |
| CRUISER-CAF-001 | Clear | 818187012668 | 10818187012665 | 20818187012662 |
| CRUISER-OAF-001 | Black | 818187012689 | 10818187012689 | 20818187012686 |

# EYE PROTECTION

## REAPER | CLASSIC OR ANTI-FOG

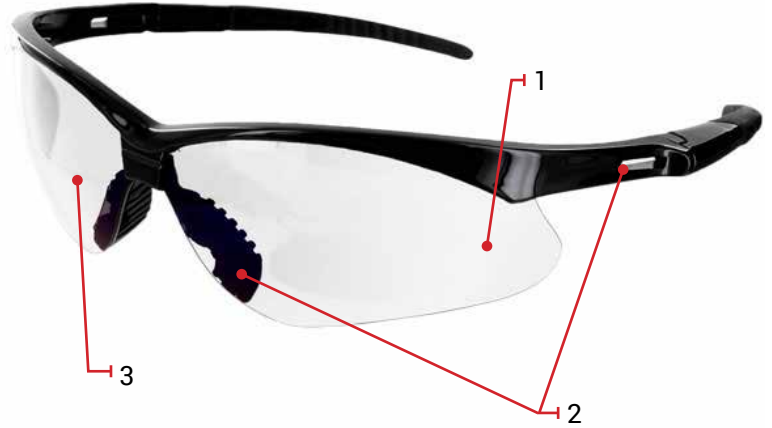
Polycarbonate Safety Glasses with Anti-Scratch / Anti-UV Coating and Soft Rubber Nose Piece

### FEATURES

- 1 Polycarbonate wrap around single frame lens offers a full panoramic view
- 2 Soft non-slip rubber temples and rubber nose piece provides a comfortable non-binding fit
- 3 Scratch resistant coating to protect against wear
- 4 Available in Classic or Anti-Fog

### PRODUCT SPECS

|                 |                            |
|-----------------|----------------------------|
| Lens Colors :   | Clear, Outdoor (black)     |
| Lens Coatings:  | Anti-Scratch   Anti-Fog    |
| Frame Style:    | Rimless                    |
| Frame Material: | Polycarbonate              |
| Bridge:         | Molded                     |
| Style:          | Classic   Anti-Fog         |
| Certifications: | ANSI Z87.1+, TAA Compliant |



### ORDER NUMBERS

| Item Number     | Color | Pair         | Dozen          | Case           |
|-----------------|-------|--------------|----------------|----------------|
| <b>Classic</b>  |       |              |                |                |
| SCT-CLR-001     | Clear | 818187012699 | 10818187012696 | 20818187012693 |
| SCT-BLK-001     | Black | 818187012705 | 10818187012702 | 20818187012709 |
| <b>Anti-Fog</b> |       |              |                |                |
| SCT-CLRAF-001   | Clear | 818187012712 | 10818187012719 | 20818187012716 |
| SCT-BLKAF-001   | Black | 818187012726 | 10818187012726 | 20818187012723 |

## SCOUT | CLASSIC OR ANTI-FOG

Polycarbonate Safety Glasses with Anti-Scratch / Anti-UV Coating and Soft Rubber Nose & Ear Pieces

### FEATURES

- 1 Polycarbonate wrap around single frame lens offers a full panoramic view
- 2 Soft, non-slip rubber nose and ear pieces provide a comfortable non-binding fit
- 3 Scratch resistant coating to protect against wear
- 4 Available in Classic or Anti-Fog

### PRODUCT SPECS

|                 |                            |
|-----------------|----------------------------|
| Colors :        | Clear, Outdoor (black)     |
| Lens Coatings:  | Anti-Scratch   Anti-Fog    |
| Frame Style:    | Rimless                    |
| Frame Material: | Polycarbonate              |
| Bridge:         | Molded                     |
| Style:          | Classic   Anti-Fog         |
| Certifications: | ANSI Z87.1+, TAA Compliant |



### ORDER NUMBERS

| Item Number     | Color | Pair         | Dozen          | Case           |
|-----------------|-------|--------------|----------------|----------------|
| <b>Classic</b>  |       |              |                |                |
| SCT-CLR-001     | Clear | 818187012699 | 10818187012696 | 20818187012693 |
| SCT-BLK-001     | Black | 818187012705 | 10818187012702 | 20818187012709 |
| <b>Anti-Fog</b> |       |              |                |                |
| SCT-CLRAF-001   | Clear | 818187012712 | 10818187012719 | 20818187012716 |
| SCT-BLKAF-001   | Black | 818187012726 | 10818187012726 | 20818187012723 |



**WWW.AZUSASAFETY.COM**

**1 (909) 391-2100**

**1299 W. STATE ST.  
ONTARIO, CA 9176  
UNITED STATES**

**CUSTOMERSERVICE@AZUSASAFETY.COM**

**FAX: 1 (909) 391-2110**